

MRGPRX2 Antibody

PACO38746

Description

This MRGPRX2 Antibody is supplied as a kit for advanced applications. The kit includes Bradford Reagent to quantify total protein concentration for accurate sample normalization (Optional).

Product Information

SKU:	PACO38746
Contents:	50µg Bradford Reagent: 1 vial (2ml)
Category:	Polyclonal Antibody
Synonyms:	MRGPRX2, MRGX2, Mas-related G-protein coupled receptor member X2
Clone:	Polyclonal
Applications:	ELISA WB IF
Conjugation:	Non-conjugated
Reactivity:	Human, Mouse

Antibody Data

Isotype:	IgG
Uniprot:	Q96LB1
Host Species:	Rabbit
Purification:	>95%, Protein G purified
Immunogen:	Recombinant Human Mas-related G-protein coupled receptor member X2 protein (286-330AA)
Immunogen Species:	Homo sapiens (Human)
Buffer:	Preservative: 0.03% Proclin 300 Constituents: 50% Glycerol, 0.01M PBS, PH 7.4
Form:	Liquid

Manufacturers Statement: This final kit system is assembled and quality-released by Assay Genie Limited.

Preparation & Storage

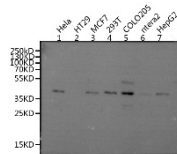
Storage: Upon receipt, store at -20°C or -80°C. Avoid repeated freeze.
Store Bradford Reagent at Room Temperature for 1 Year.

Recommended Dilutions:	Application	Recommended Dilution
	WB	1:1000-1:5000
	IF	1:50-1:200

Protein Quantification (Optional): To quantify total protein levels, use the Bradford Reagent included in this kit. Visit <https://www.assaygenie.com/bradford-protein-assay-protocol/> to view the full protocol

Validation Data

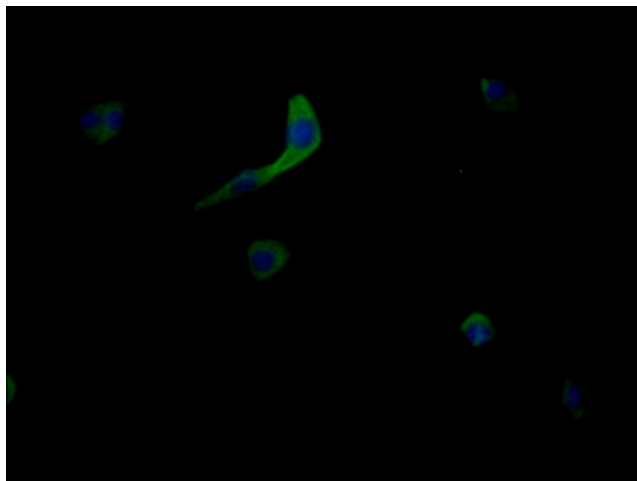
Image

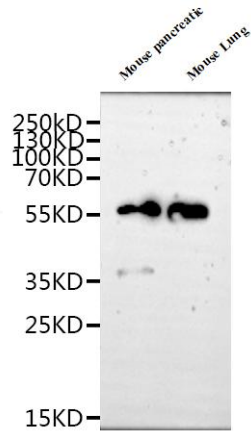


Description

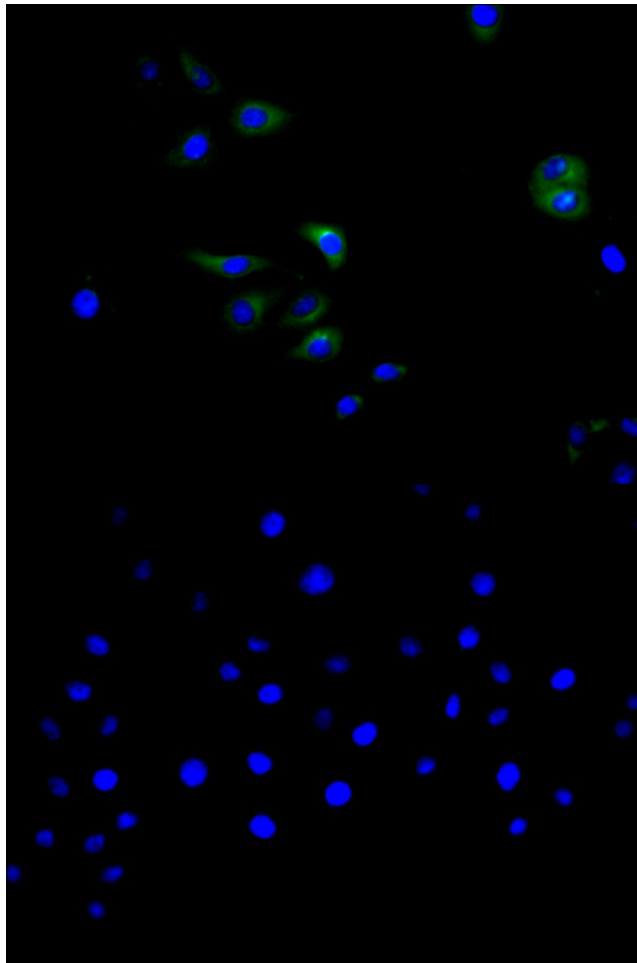
Western Blot Positive WB detected in: Hela whole cell lysate, MCF7 whole cell lysate, 293T whole cell lysate, COLO205 whole cell lysate, HepG2 whole cell lysate All lanes: MRGPRX2 antibody at 1:1000 Secondary Goat polyclonal to rabbit IgG at 1/50000 Predicted band size: 38 kDa Observed band size: 38 kDa

Immunofluorescent analysis of MCF-7 cells using PACO38746 at dilution of 1:200 and Alexa Fluor 488-conjugated AffiniPure Goat Anti-Rabbit IgG(H+L)



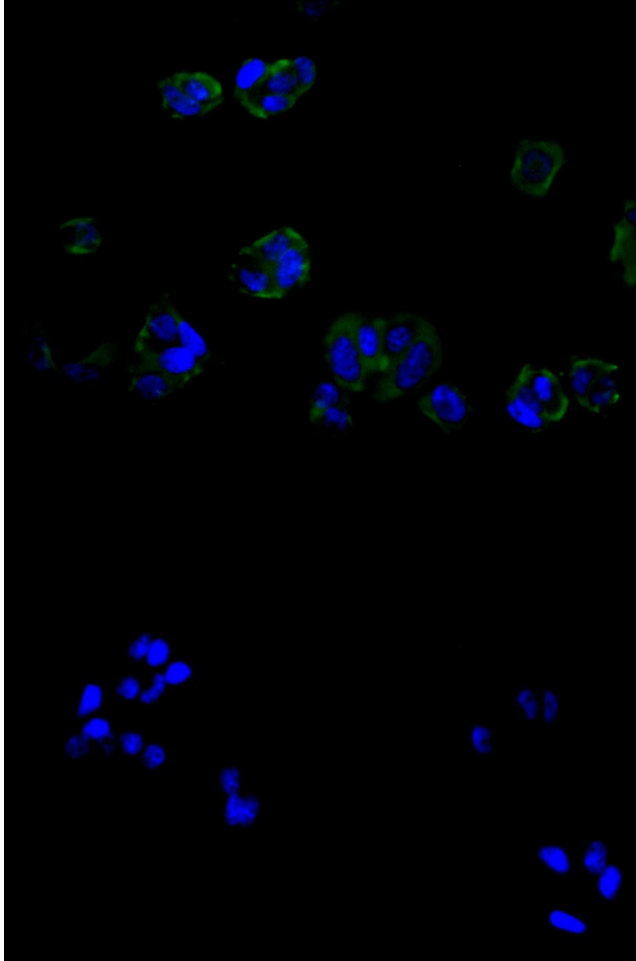


Western Blot Positive WB detected in: Mouse pancreatic tissue lysate, Mouse Lung tissue lysate All lanes: MRGPRX2 antibody at 1:1000 Secondary Goat polyclonal to rabbit IgG at 1/50000 dilution Predicted band size: 40 kDa Observed band size: 40, 55 kDa



Immunofluorescence staining of HeLa cell with PACO38746 at 1:60, counter-stained with DAPI. The cells were fixed in 4% formaldehyde and blocked in 10% normal Goat Serum. The cells were then incubated with the antibody overnight at 4C. The secondary antibody was Alexa Fluor 488-conjugated AffiniPure Goat Anti-Rabbit IgG(H+L).

Immunofluorescence staining of HeLa cell with 5% goat serum, counter-stained with DAPI. The cells were fixed in 4% formaldehyde and blocked in 10% normal Goat Serum. The cells were then incubated with the antibody overnight at 4C. The secondary antibody was Alexa Fluor 488-conjugated AffiniPure Goat Anti-Rabbit IgG(H+L).



Immunofluorescence staining of MCF-7 cell with PACO38746 at 1:60, counter-stained with DAPI. The cells were fixed in 4% formaldehyde and blocked in 10% normal Goat Serum. The cells were then incubated with the antibody overnight at 4C. The secondary antibody was Alexa Fluor 488-conjugated AffiniPure Goat Anti-Rabbit IgG(H+L).

Immunofluorescence staining of MCF-7 cell with 5% goat serum, counter-stained with DAPI. The cells were fixed in 4% formaldehyde and blocked in 10% normal Goat Serum. The cells were then incubated with the antibody overnight at 4C. The secondary antibody was Alexa Fluor 488-conjugated AffiniPure Goat Anti-Rabbit IgG(H+L).