

EEF2KMT Antibody

PACO39830

Description

This EEF2KMT Antibody is supplied as a kit for advanced applications. The kit includes Bradford Reagent to quantify total protein concentration for accurate sample normalization (Optional).

Product Information

SKU:	PACO39830
Contents:	50µl Bradford Reagent: 1 vial (2ml)
Category:	Polyclonal Antibody
Synonyms:	EEF2KMT antibody, FAM86A antibody, SB153Protein-lysine N-methyltransferase EEF2KMT antibody, EC 2.1.1.- antibody, eEF2-lysine methyltransferase antibody, eEF2-KMT antibody
Clone:	Polyclonal
Applications:	ELISA WB IHC
Conjugation:	Non-conjugated
Reactivity:	Human

Antibody Data

Isotype:	IgG
Uniprot:	Q96G04
Host Species:	Rabbit
Purification:	Antigen affinity purification
Immunogen:	Synthesized peptide derived from human FA86A
Immunogen Species:	Homo sapiens (Human)
Buffer:	Liquid in PBS containing 50% glycerol, 0.5% BSA and 0.02% sodium azide.
Form:	Liquid

Manufacturers Statement: This final kit system is assembled and quality-released by Assay Genie Limited.

Preparation & Storage

Storage: Upon receipt, store at -20°C or -80°C. Avoid repeated freeze.

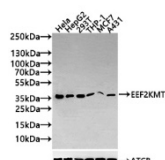
Store Bradford Reagent at Room Temperature for 1 Year.

Recommended Dilutions:	Application	Recommended Dilution
	WB	1:1000-1:3000
	IHC	1:100-1:300

Protein Quantification (Optional): To quantify total protein levels, use the Bradford Reagent included in this kit. Visit <https://www.assaygenie.com/bradford-protein-assay-protocol/> to view the full protocol

Validation Data

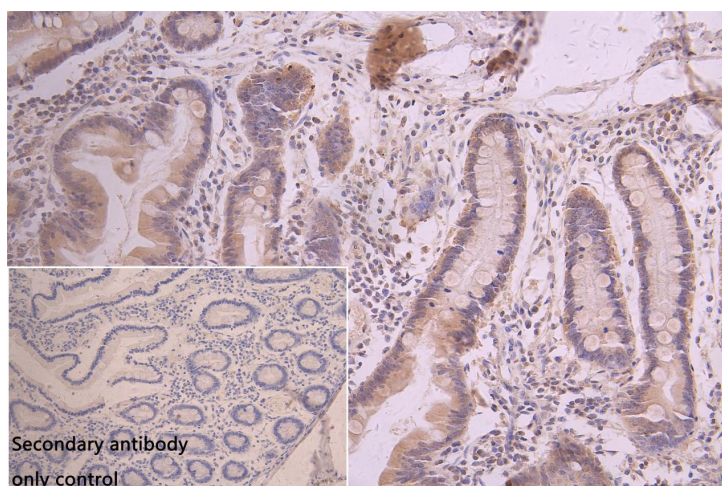
Image

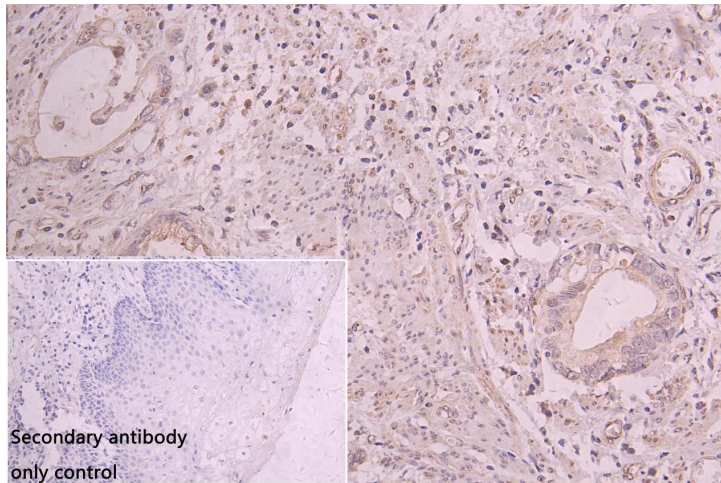


Description

Western Blot Positive WB detected in: Hela whole cell lysate(20µg), HepG2 whole cell lysate(20µg), 293T whole cell lysate(20µg), THP-1 whole cell lysate(20µg), MCF7 whole cell lysate(20µg), A431 whole cell lysate(20µg) All lanes: EEF2KMT antibody at 1:1000 Secondary Goat polyclonal to rabbit IgG at 1/20000 dilution Predicted band size: 37, 34 kDa Observed band size: 37 kDa Exposure time: 60s

IHC image of PACO39830 diluted at 1:100 and staining in paraffin-embedded human small intestine tissue performed on a Leica Bond™ system. After dewaxing and hydration, antigen retrieval was mediated by high pressure in a citrate buffer (pH 6.0). Section was blocked with 10% normal goat serum 30min at RT. Then primary antibody (1% BSA) was incubated at 4°C overnight. The primary is detected by a Goat anti-rabbit polymer IgG labeled by HRP and visualized using 0.05% DAB. Secondary antibody only control: uses 1% BSA instead of primary antibody





IHC image of PACO39830 diluted at 1:100 and staining in paraffin-embedded human cervical cancer performed on a Leica Bond™ system. After dewaxing and hydration, antigen retrieval was mediated by high pressure in a citrate buffer (pH 6.0). Section was blocked with 10% normal goat serum 30min at RT. Then primary antibody (1% BSA) was incubated at 4°C overnight. The primary is detected by a Goat anti-rabbit polymer IgG labeled by HRP and visualized using 0.05% DAB. Secondary antibody only control: uses 1% BSA instead of primary antibody