

CYBC1 Antibody

PACO40274

Description

This CYBC1 Antibody is supplied as a kit for advanced applications. The kit includes Bradford Reagent to quantify total protein concentration for accurate sample normalization (Optional).

Product Information

SKU:	PACO40274
Contents:	50µg Bradford Reagent: 1 vial (2ml)
Category:	-
Synonyms:	CYBC1, C17orf62, EROS, Cytochrome b-245 chaperone 1, Essential for reactive oxygen species protein, Eros
Clone:	Polyclonal
Applications:	ELISA WB IHC IF
Conjugation:	Non-conjugated
Reactivity:	Human, Mouse

Antibody Data

Isotype:	IgG
Uniprot:	Q9BQA9
Host Species:	Rabbit
Purification:	Antigen Affinity Purified
Immunogen:	Recombinant Human Cytochrome b-245 chaperone 1 protein (43-187AA)
Immunogen Species:	Homo sapiens (Human)
Buffer:	Preservative: 0.03% Proclin 300 Constituents: 50% Glycerol, 0.01M PBS, PH 7.4
Form:	Liquid

Manufacturers Statement: This final kit system is assembled and quality-released by Assay Genie Limited.

Preparation & Storage

Storage: Upon receipt, store at -20°C or -80°C. Avoid repeated freeze.
Store Bradford Reagent at Room Temperature for 1 Year.

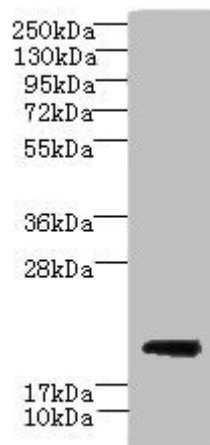
Recommended Dilutions:

Application	Recommended Dilution
WB	1:500-1:2000
IHC	1:20-1:200
IF	1:50-1:200

Protein Quantification (Optional): To quantify total protein levels, use the Bradford Reagent included in this kit. Visit <https://www.assaygenie.com/bradford-protein-assay-protocol/> to view the full protocol

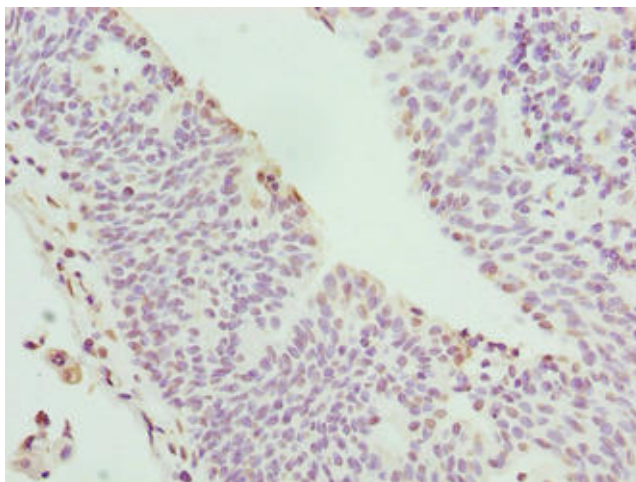
Validation Data

Image

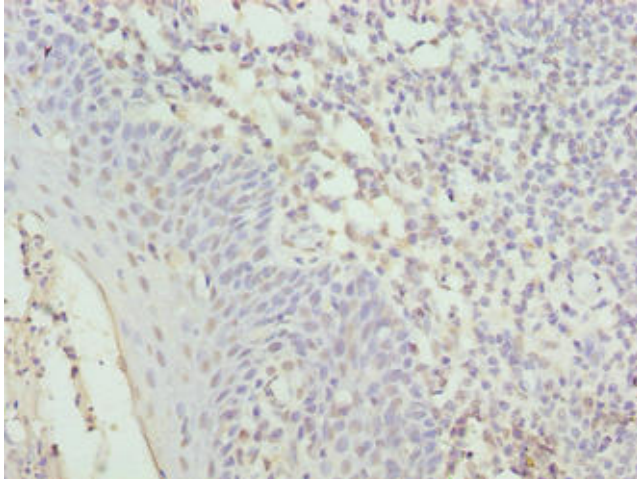


Description

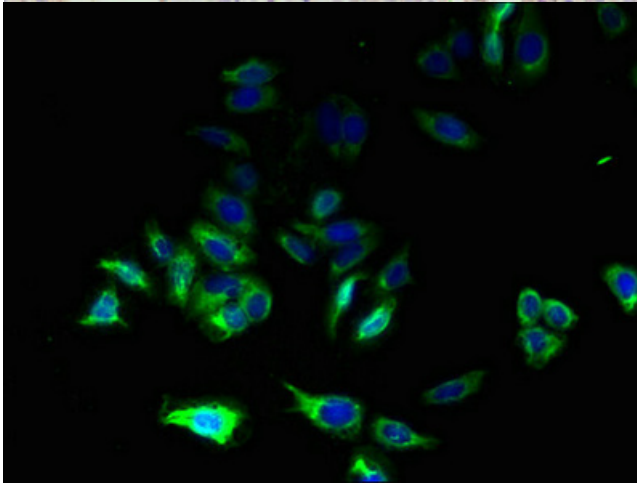
Western blot All lanes: CYBC1 antibody at 1.5µg/ml + Mouse liver tissue
Secondary Goat polyclonal to rabbit IgG at 1/10000 dilution Predicted band size: 21, 20 kDa Observed band size: 21 kDa



Immunohistochemistry of paraffin-embedded human bladder cancer using PACO40274 at dilution of 1:100



Immunohistochemistry of paraffin-embedded human tonsil tissue using PACO40274 at dilution of 1:100



Immunofluorescent analysis of HepG2 cells using PACO40274 at dilution of 1:100 and Alexa Fluor 488-conjugated AffiniPure Goat Anti-Rabbit IgG(H+L)