

ENKD1 Antibody

PACO40782

Description

This ENKD1 Antibody is supplied as a kit for advanced applications. The kit includes Bradford Reagent to quantify total protein concentration for accurate sample normalization (Optional).

Product Information

SKU:	PACO40782
Contents:	50µg Bradford Reagent: 1 vial (2ml)
Category:	-
Synonyms:	Chromosome 16 open reading frame 48 antibody, DAKV6410 antibody, DKFZp434A1319 antibody, Enkd1 antibody, ENKD1_HUMAN antibody, Enkurin domain containing 1 antibody, Enkurin domain-containing protein 1 antibody, Hypothetical protein LOC84080 antibody, UNQ6410 antibody
Clone:	Polyclonal
Applications:	ELISA WB IHC
Conjugation:	Non-conjugated
Reactivity:	Human, Mouse

Antibody Data

Isotype:	IgG
Uniprot:	Q9H0I2
Host Species:	Rabbit
Purification:	>95%, Protein G purified
Immunogen:	Recombinant Human Enkurin domain-containing protein 1 protein (1-346AA)
Immunogen Species:	Homo sapiens (Human)
Buffer:	Preservative: 0.03% Proclin 300 Constituents: 50% Glycerol, 0.01M PBS, PH 7.4
Form:	Liquid

Manufacturers Statement: This final kit system is assembled and quality-released by Assay Genie Limited.

Preparation & Storage

Storage: Upon receipt, store at -20°C or -80°C. Avoid repeated freeze.

Store Bradford Reagent at Room Temperature for 1 Year.

Recommended Dilutions:

Application	Recommended Dilution
WB	1:500-1:2000
IHC	1:20-1:200

Protein Quantification (Optional):

To quantify total protein levels, use the Bradford Reagent included in this kit. Visit <https://www.assaygenie.com/bradford-protein-assay-protocol/> to view the full protocol

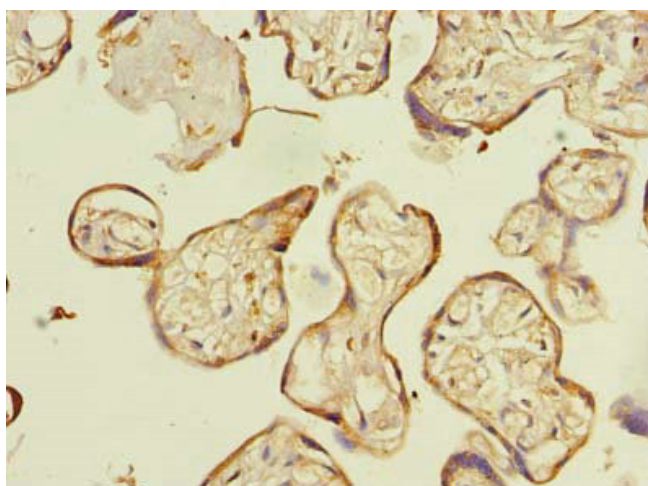
Validation Data

Image

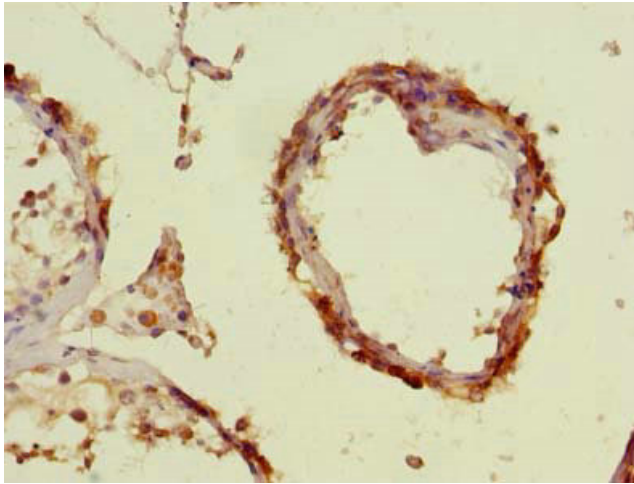


Description

Western blot All lanes: ENKD1 antibody at 7µg/ml + Mouse brain tissue Secondary Goat polyclonal to rabbit IgG at 1/10000 dilution Predicted band size: 39, 26 kDa Observed band size: 26 kDa



Immunohistochemistry of paraffin-embedded human placenta tissue using PACO40782 at dilution of 1:100



Immunohistochemistry of paraffin-embedded human testis tissue using PACO40782 at dilution of 1:100