

ARMT1 Antibody

PACO40822

Description

This ARMT1 Antibody is supplied as a kit for advanced applications. The kit includes Bradford Reagent to quantify total protein concentration for accurate sample normalization (Optional).

Product Information

SKU:	PACO40822
Contents:	50µg Bradford Reagent: 1 vial (2ml)
Category:	-
Synonyms:	ARMT1 antibody, C6orf211Damage-control phosphatase ARMT1 antibody, EC 3.1.3.- antibody, Acidic residue methyltransferase 1 antibody, Protein-glutamate O-methyltransferase antibody, EC 2.1.1.- antibody, Sugar phosphate phosphatase ARMT1 antibody
Clone:	Polyclonal
Applications:	ELISA WB IHC
Conjugation:	Non-conjugated
Reactivity:	Human

Antibody Data

Isotype:	IgG
Uniprot:	Q9H993
Host Species:	Rabbit
Purification:	>95%, Protein G purified
Immunogen:	Recombinant Human Protein-glutamate O-methyltransferase protein (2-250AA)
Immunogen Species:	Homo sapiens (Human)
Buffer:	Preservative: 0.03% Proclin 300 Constituents: 50% Glycerol, 0.01M PBS, PH 7.4
Form:	Liquid

Manufacturers Statement: This final kit system is assembled and quality-released by Assay Genie Limited.

Preparation & Storage

Storage: Upon receipt, store at -20°C or -80°C. Avoid repeated freeze.

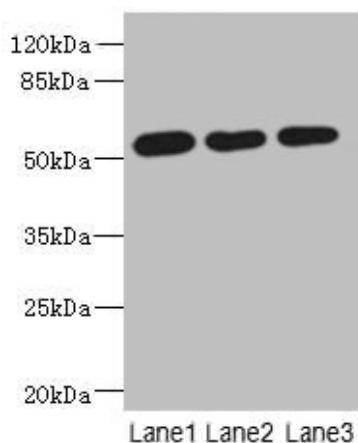
Store Bradford Reagent at Room Temperature for 1 Year.

Recommended Dilutions:	Application	Recommended Dilution
	WB	1:1000-1:5000
	IHC	1:20-1:200

Protein Quantification (Optional): To quantify total protein levels, use the Bradford Reagent included in this kit. Visit <https://www.assaygenie.com/bradford-protein-assay-protocol/> to view the full protocol

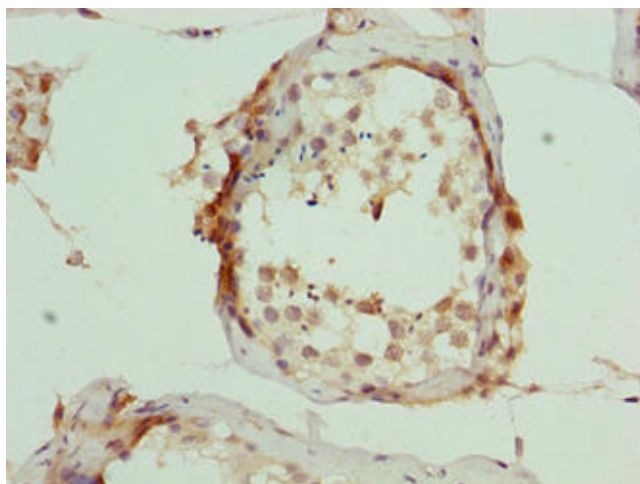
Validation Data

Image

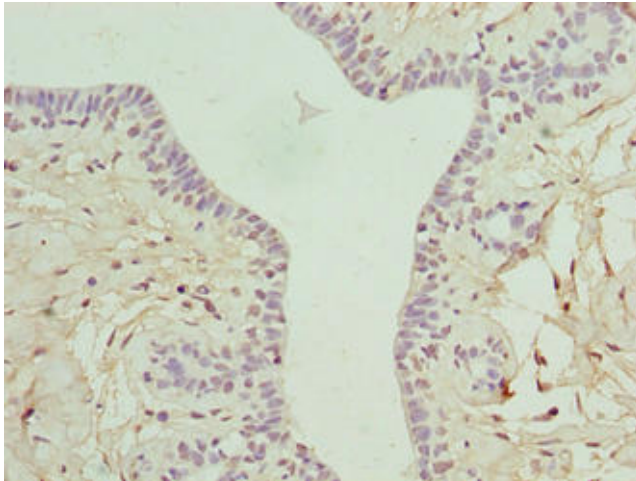


Description

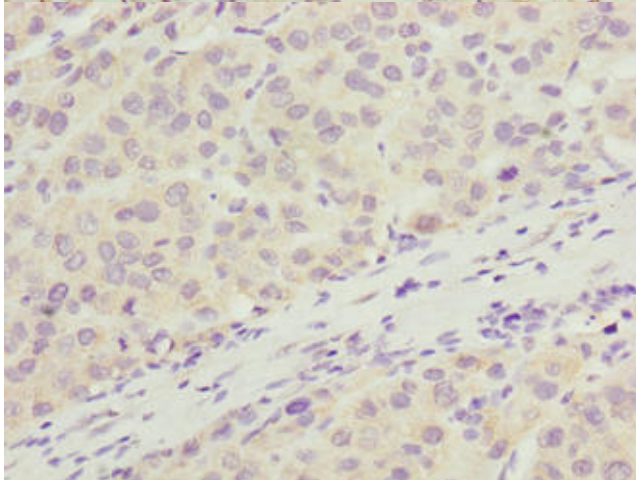
Western blot All lanes: ARMT1 antibody at 0.6µg/ml Lane 1: MCF-7 whole cell lysate Lane 2: A431 whole cell lysate Lane 3: 293T whole cell lysate Secondary Goat polyclonal to rabbit IgG at 1/10000 dilution Predicted band size: 52 kDa Observed band size: 52 kDa



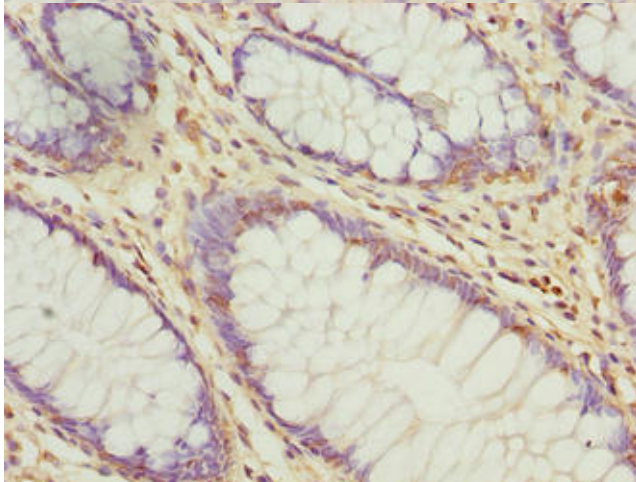
Immunohistochemistry of paraffin-embedded human testis tissue using PACO40822 at dilution of 1:100



Immunohistochemistry of paraffin-embedded human breast cancer using PACO40822 at dilution of 1:100



Immunohistochemistry of paraffin-embedded human liver cancer using PACO40822 at dilution of 1:100



Immunohistochemistry of paraffin-embedded human colon cancer using PACO40822 at dilution of 1:100