

NAA38 Antibody

PACO40950

Description

This NAA38 Antibody is supplied as a kit for advanced applications. The kit includes Bradford Reagent to quantify total protein concentration for accurate sample normalization (Optional).

Product Information

SKU:	PACO40950
Contents:	50µg Bradford Reagent: 1 vial (2ml)
Category:	-
Synonyms:	LSM domain-containing protein 1 antibody, lsmd1 antibody, LSMD1_HUMAN antibody, MAK31 antibody, Phosphonoformate immuno-associated protein 2 antibody
Clone:	Polyclonal
Applications:	ELISA WB IHC IF
Conjugation:	Non-conjugated
Reactivity:	Human, Mouse

Antibody Data

Isotype:	IgG
Uniprot:	Q9BRA0
Host Species:	Rabbit
Purification:	>95%, Protein G purified
Immunogen:	Recombinant Human N-alpha-acetyltransferase 38, NatC auxiliary subunit protein (2-173AA)
Immunogen Species:	Homo sapiens (Human)
Buffer:	Preservative: 0.03% Proclin 300 Constituents: 50% Glycerol, 0.01M PBS, PH 7.4
Form:	Liquid

Manufacturers Statement: This final kit system is assembled and quality-released by Assay Genie Limited.

Preparation & Storage

Storage: Upon receipt, store at -20°C or -80°C. Avoid repeated freeze.

Store Bradford Reagent at Room Temperature for 1 Year.

Recommended Dilutions:

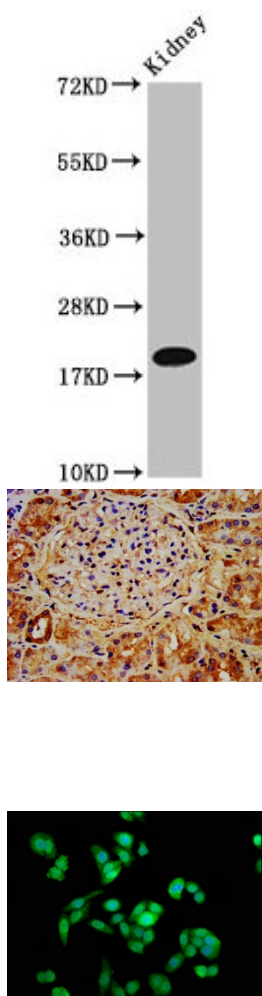
Application	Recommended Dilution
WB	1:500-1:5000
IHC	1:200-1:500
IF	1:50-1:200

Protein Quantification (Optional):

To quantify total protein levels, use the Bradford Reagent included in this kit. Visit <https://www.assaygenie.com/bradford-protein-assay-protocol/> to view the full protocol

Validation Data

Image



Description

Western Blot Positive WB detected in: Mouse kidney tissue All lanes: NAA38 antibody at 4µg/ml Secondary Goat polyclonal to rabbit IgG at 1/50000 dilution Predicted band size: 14, 19 kDa Observed band size: 19 kDa

IHC image of PACO40950 diluted at 1:400 and staining in paraffin-embedded human kidney tissue performed on a Leica Bond™ system. After dewaxing and hydration, antigen retrieval was mediated by high pressure in a citrate buffer (pH 6.0). Section was blocked with 10% normal goat serum 30min at RT. Then primary antibody (1% BSA) was incubated at 4°C overnight. The primary is detected by a biotinylated secondary antibody and visualized using an HRP conjugated SP system.

Immunofluorescence staining of PC-3 cells with PACO40950 at 1:133, counter-stained with DAPI. The cells were fixed in 4% formaldehyde, permeabilized using 0.2% Triton X-100 and blocked in 10% normal Goat Serum. The cells were then incubated with the antibody overnight at 4°C. The secondary antibody was Alexa Fluor 488-conjugated AffiniPure Goat Anti-Rabbit IgG(H+L).