

BDH2 Antibody

PACO41254

Description

This BDH2 Antibody is supplied as a kit for advanced applications. The kit includes Bradford Reagent to quantify total protein concentration for accurate sample normalization (Optional).

Product Information

SKU:	PACO41254
Contents:	50µg Bradford Reagent: 1 vial (2ml)
Category:	-
Synonyms:	3 hydroxybutyrate dehydrogenase type 2 antibody, 3-hydroxybutyrate dehydrogenase type 2 antibody, BDH 2 antibody, BDH2 antibody, BDH2_HUMAN antibody, Dehydrogenase/reductase (SDR family) member 6 antibody, Dehydrogenase/reductase SDR family member 6 antibody, DHRS6 antibody, EFA6R antibody, FLJ13261 antibody, Oxidoreductase ucpA antibody, PRO20933 antibody, R beta hydroxybutyrate dehydrogenase antibody, R-beta-hydroxybutyrate dehydrogenase antibody, SDR15C1 antibody, Short chain dehydrogenase/reductase family 15C member 1 antibody, UCPA OR antibody, UNQ6308 antibody
Clone:	Polyclonal
Applications:	ELISA IHC
Conjugation:	Non-conjugated
Reactivity:	Human

Antibody Data

Isotype:	IgG
Uniprot:	Q9BUT1
Host Species:	Rabbit
Purification:	>95%, Protein G purified
Immunogen:	Recombinant Human 3-hydroxybutyrate dehydrogenase type 2 protein (1-245AA)
Immunogen Species:	Homo sapiens (Human)

Manufacturers Statement: This final kit system is assembled and quality-released by Assay Genie Limited.

Buffer: Preservative: 0.03% Proclin 300 Constituents: 50% Glycerol, 0.01M PBS,
PH 7.4

Form: Liquid

Preparation & Storage

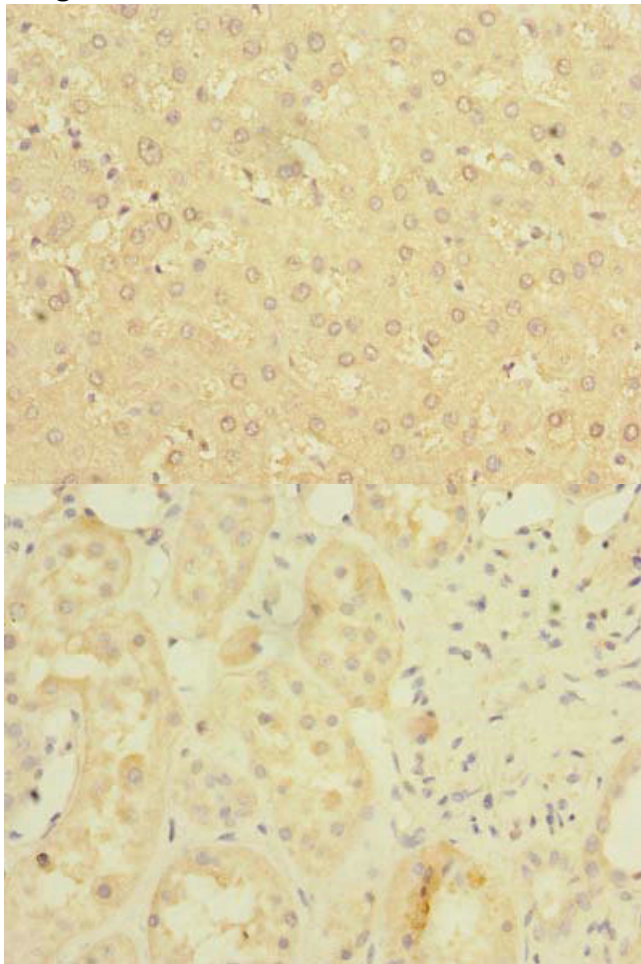
Storage: Upon receipt, store at -20°C or -80°C. Avoid repeated freeze.
Store Bradford Reagent at Room Temperature for 1 Year.

Recommended Dilutions:	Application	Recommended Dilution
	IHC	1:20-1:200

Protein Quantification (Optional): To quantify total protein levels, use the Bradford Reagent included in this kit. Visit <https://www.assaygenie.com/bradford-protein-assay-protocol/> to view the full protocol

Validation Data

Image



Description

Immunohistochemistry of paraffin-embedded human liver tissue using PACO41254 at dilution of 1:100

Immunohistochemistry of paraffin-embedded human kidney tissue using PACO41254 at dilution of 1:100