

C20orf27 Antibody

PACO41298

Description

This C20orf27 Antibody is supplied as a kit for advanced applications. The kit includes Bradford Reagent to quantify total protein concentration for accurate sample normalization (Optional).

Product Information

SKU:	PACO41298
Contents:	50µg Bradford Reagent: 1 vial (2ml)
Category:	-
Synonyms:	C20orf27UPF0687 protein C20orf27 antibody
Clone:	Polyclonal
Applications:	ELISA WB IHC
Conjugation:	Non-conjugated
Reactivity:	Human

Antibody Data

Isotype:	IgG
Uniprot:	Q9GZN8
Host Species:	Rabbit
Purification:	>95%, Protein G purified
Immunogen:	Recombinant Human UPF0687 protein C20orf27 protein (3-174AA)
Immunogen Species:	Homo sapiens (Human)
Buffer:	Preservative: 0.03% Proclin 300 Constituents: 50% Glycerol, 0.01M PBS, PH 7.4
Form:	Liquid

Preparation & Storage

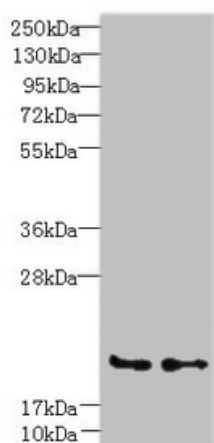
Storage: Upon receipt, store at -20°C or -80°C. Avoid repeated freeze.
Store Bradford Reagent at Room Temperature for 1 Year.

Recommended Dilutions:	Application	Recommended Dilution
	WB	1:500-1:2000
	IHC	1:20-1:200

Protein Quantification (Optional): To quantify total protein levels, use the Bradford Reagent included in this kit. Visit <https://www.assaygenie.com/bradford-protein-assay-protocol/> to view the full protocol

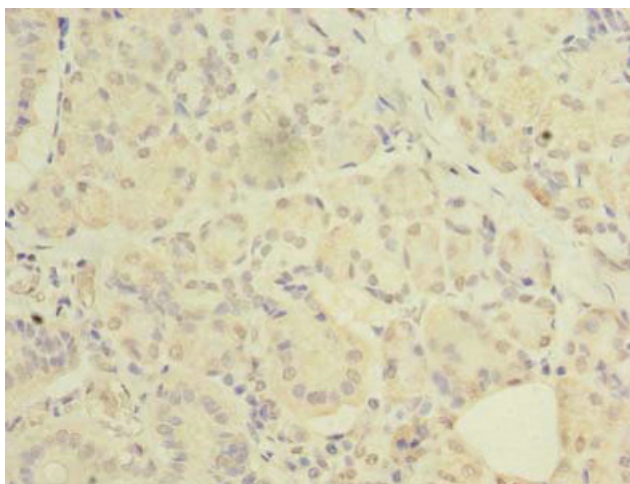
Validation Data

Image

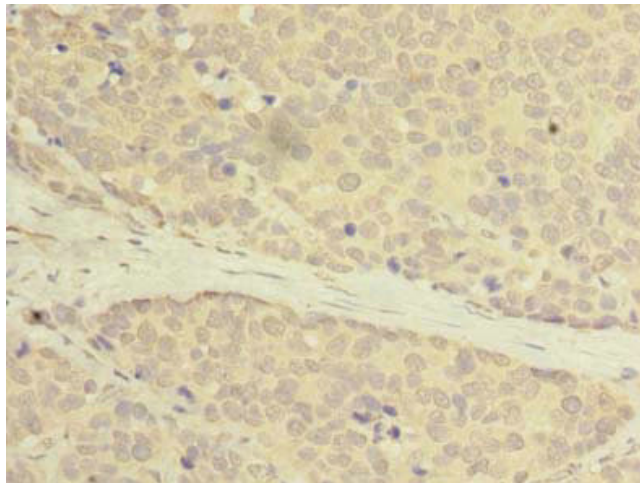


Description

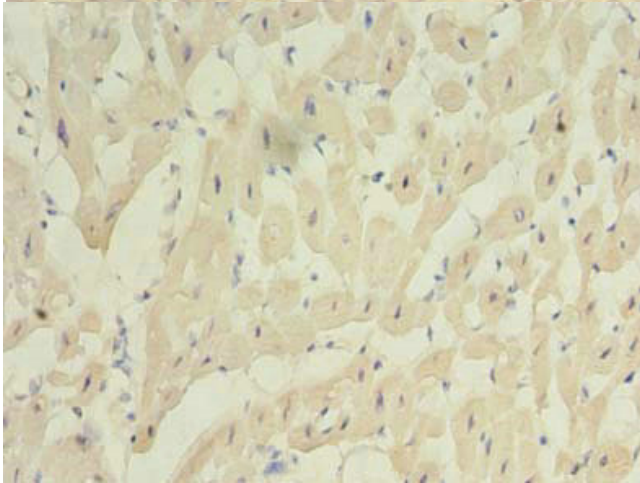
Western blot All lanes: C20orf27 antibody at 6µg/ml Lane 1: HCT116 whole cell lysate Lane 2: MDA-MB-231 whole cell lysate Secondary Goat polyclonal to rabbit IgG at 1/10000 dilution Predicted band size: 20, 22 kDa Observed band size: 20 kDa



Immunohistochemistry of paraffin-embedded human pancreatic tissue using PACO41298 at dilution of 1: 100



Immunohistochemistry of paraffin-embedded human gastric cancer using PACO41298 at dilution of 1: 100



Immunohistochemistry of paraffin-embedded human heart tissue using PACO41298 at dilution of 1:100