

CCDC68 Antibody

PACO41606

Description

This CCDC68 Antibody is supplied as a kit for advanced applications. The kit includes Bradford Reagent to quantify total protein concentration for accurate sample normalization (Optional).

Product Information

SKU:	PACO41606
Contents:	50µg Bradford Reagent: 1 vial (2ml)
Category:	-
Synonyms:	CCD68_HUMAN antibody, CCDC 68 antibody, CCDC68 antibody, Coiled coil domain containing 68 antibody, Coiled coil domain containing protein 68 antibody, Coiled-coil domain-containing protein 68 antibody, CTCL associated antigen se57 1 antibody, CTCL tumor antigen se57 1 antibody, CTCL-associated antigen se57-1 antibody, Cutaneous T cell lymphoma associated antigen antibody, Cutaneous T cell lymphoma associated antigen se57 1 antibody, Cutaneous T-cell lymphoma-associated antigen se57-1 antibody, FLJ25368 antibody, SE57 1 antibody
Clone:	Polyclonal
Applications:	ELISA IHC
Conjugation:	Non-conjugated
Reactivity:	Human

Antibody Data

Isotype:	IgG
Uniprot:	Q9H2F9
Host Species:	Rabbit
Purification:	>95%, Protein G purified
Immunogen:	Recombinant Human Coiled-coil domain-containing protein 68 protein (131-335AA)
Immunogen Species:	Homo sapiens (Human)

Manufacturers Statement: This final kit system is assembled and quality-released by Assay Genie Limited.

Buffer: Preservative: 0.03% Proclin 300 Constituents: 50% Glycerol, 0.01M PBS,
PH 7.4

Form: Liquid

Preparation & Storage

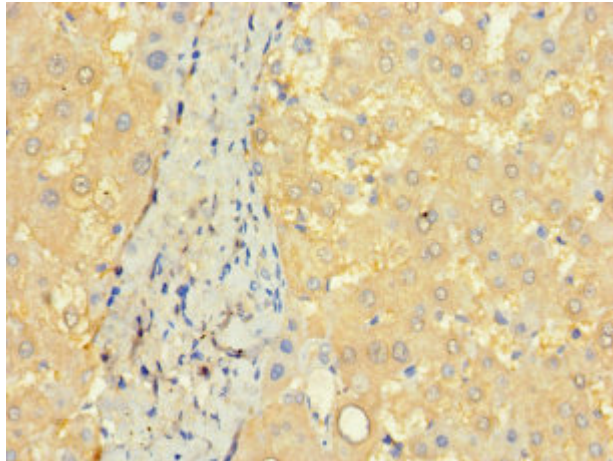
Storage: Upon receipt, store at -20°C or -80°C. Avoid repeated freeze.
Store Bradford Reagent at Room Temperature for 1 Year.

Recommended Dilutions:	Application	Recommended Dilution
	IHC	1:20-1:200

Protein Quantification (Optional): To quantify total protein levels, use the Bradford Reagent included in this kit. Visit <https://www.assaygenie.com/bradford-protein-assay-protocol/> to view the full protocol

Validation Data

Image



Description

Immunohistochemistry of paraffin-embedded human liver tissue using PACO41606 at dilution of 1:100