

LRRN3 Antibody

PACO41618

Description

This LRRN3 Antibody is supplied as a kit for advanced applications. The kit includes Bradford Reagent to quantify total protein concentration for accurate sample normalization (Optional).

Product Information

SKU:	PACO41618
Contents:	50µg Bradford Reagent: 1 vial (2ml)
Category:	Polyclonal Antibody
Synonyms:	LRRN3 antibody, Nbla10363 antibody, UNQ194/PRO220 antibody, Leucine-rich repeat neuronal protein 3 antibody, Neuronal leucine-rich repeat protein 3 antibody, NLRR-3 antibody
Clone:	Polyclonal
Applications:	ELISA WB IHC IF
Conjugation:	Non-conjugated
Reactivity:	Human

Antibody Data

Isotype:	IgG
Uniprot:	Q9H3W5
Host Species:	Rabbit
Purification:	>95%, Protein G purified
Immunogen:	Recombinant Human Leucine-rich repeat neuronal protein 3 protein (201-500AA)
Immunogen Species:	Homo sapiens (Human)
Buffer:	Preservative: 0.03% Proclin 300 Constituents: 50% Glycerol, 0.01M PBS, PH 7.4
Form:	Liquid

Manufacturers Statement: This final kit system is assembled and quality-released by Assay Genie Limited.

Preparation & Storage

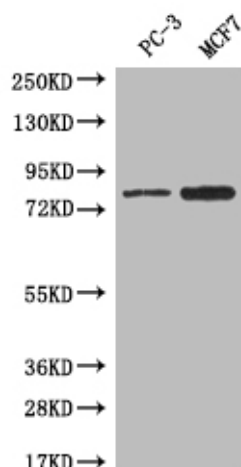
Storage: Upon receipt, store at -20°C or -80°C. Avoid repeated freeze.
Store Bradford Reagent at Room Temperature for 1 Year.

Recommended Dilutions:	Application	Recommended Dilution
	WB	1:500-1:2000
	IHC	1:20-1:200
	IF	1:50-1:200

Protein Quantification (Optional): To quantify total protein levels, use the Bradford Reagent included in this kit. Visit <https://www.assaygenie.com/bradford-protein-assay-protocol/> to view the full protocol

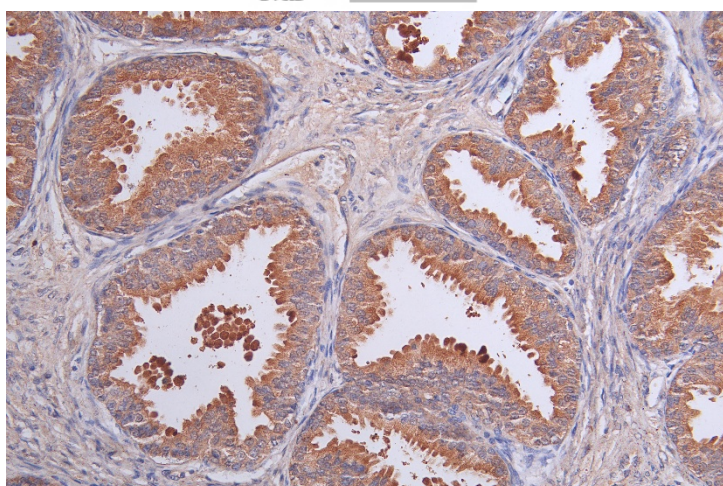
Validation Data

Image

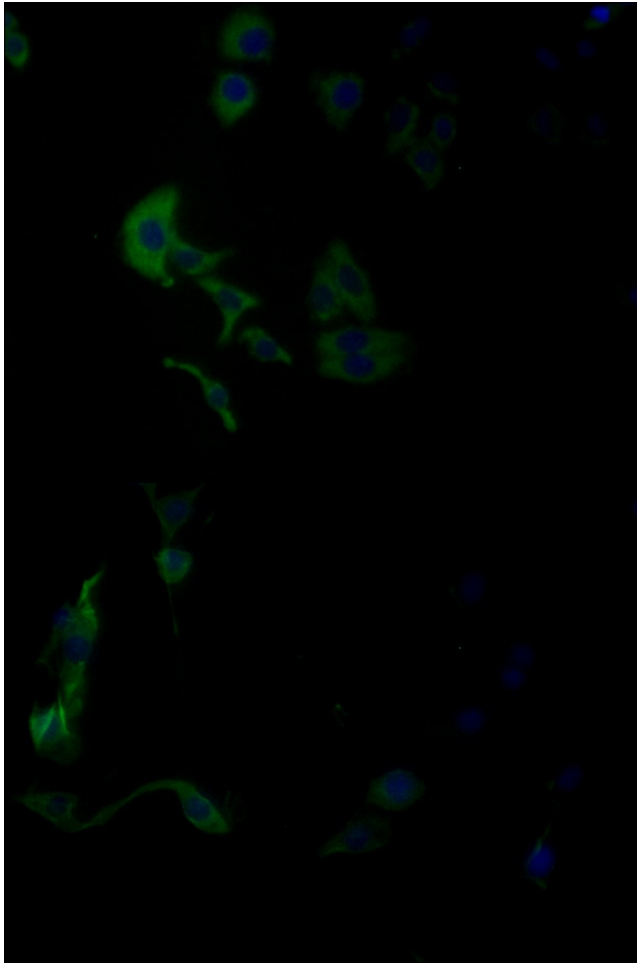


Description

Western Blot Positive WB detected in: PC-3 whole cell lysate, MCF7 whole cell lysate All lanes: LRRN3 antibody at 1:500 Secondary Goat polyclonal to rabbit IgG at 1/50000 dilution Predicted band size: 80 kDa Observed band size: 80 kDa



Immunohistochemistry of paraffin-embedded human prostate tissue using PACO41618 at dilution of 1:50



Immunofluorescence staining of HepG2 cell with PACO41618 at 1:25, counter-stained with DAPI. The cells were fixed in 4% formaldehyde and blocked in 10% normal Goat Serum. The cells were then incubated with the antibody overnight at 4°C. The secondary antibody was Alexa Fluor 488-conjugated AffiniPure Goat Anti-Rabbit IgG(H+L).

Immunofluorescence staining of MCF-7 cell with PACO41618 at 1:25, counter-stained with DAPI. The cells were fixed in 4% formaldehyde and blocked in 10% normal Goat Serum. The cells were then incubated with the antibody overnight at 4°C. The secondary antibody was Alexa Fluor 488-conjugated AffiniPure Goat Anti-Rabbit IgG(H+L).