

PKD2L2 Antibody

PACO41754

Description

This PKD2L2 Antibody is supplied as a kit for advanced applications. The kit includes Bradford Reagent to quantify total protein concentration for accurate sample normalization (Optional).

Product Information

| | |
|----------------------|---|
| SKU: | PACO41754 |
| Contents: | 50µg Bradford Reagent: 1 vial (2ml) |
| Category: | - |
| Synonyms: | PKD2L2, Polycystic kidney disease 2-like 2 protein, Polycystin-2L2, Polycystin-L2 |
| Clone: | Polyclonal |
| Applications: | ELISA IHC IF |
| Conjugation: | Non-conjugated |
| Reactivity: | Human |

Antibody Data

| | |
|---------------------------|---|
| Isotype: | IgG |
| Uniprot: | Q9NZM6 |
| Host Species: | Rabbit |
| Purification: | >95%, Protein G purified |
| Immunogen: | Recombinant Human Polycystic kidney disease 2-like 2 protein (390-523AA) |
| Immunogen Species: | Homo sapiens (Human) |
| Buffer: | Preservative: 0.03% Proclin 300 Constituents: 50% Glycerol, 0.01M PBS, PH 7.4 |
| Form: | Liquid |

Manufacturers Statement: This final kit system is assembled and quality-released by Assay Genie Limited.

Preparation & Storage

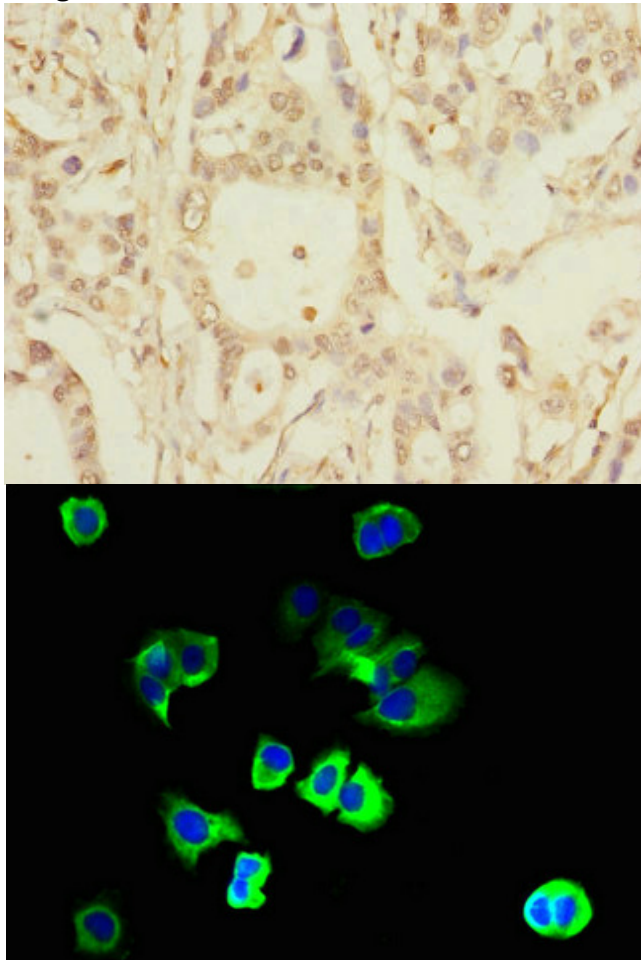
Storage: Upon receipt, store at -20°C or -80°C. Avoid repeated freeze.
Store Bradford Reagent at Room Temperature for 1 Year.

| Recommended Dilutions: | Application | Recommended Dilution |
|------------------------|-------------|----------------------|
| | IHC | 1:20-1:200 |
| | IF | 1:50-1:200 |

Protein Quantification (Optional): To quantify total protein levels, use the Bradford Reagent included in this kit. Visit <https://www.assaygenie.com/bradford-protein-assay-protocol/> to view the full protocol

Validation Data

Image



Description

Immunohistochemistry of paraffin-embedded human pancreatic cancer using PACO41754 at dilution of 1:100

Immunofluorescent analysis of MCF-7 cells using PACO41754 at dilution of 1:100 and Alexa Fluor 488-conjugated AffiniPure Goat Anti-Rabbit IgG(H+L)