

## C3orf14 Antibody

PACO41950

### Description

---

This C3orf14 Antibody is supplied as a kit for advanced applications. The kit includes Bradford Reagent to quantify total protein concentration for accurate sample normalization (Optional).

### Product Information

---

<b>SKU:</b>	PACO41950
<b>Contents:</b>	50µg Bradford Reagent: 1 vial (2ml)
<b>Category:</b>	-
<b>Synonyms:</b>	C3orf14 antibody, CC014_HUMAN antibody, chromosome 3 open reading frame 14 antibody, HT021 antibody, Uncharacterized protein C3orf14 antibody
<b>Clone:</b>	Polyclonal
<b>Applications:</b>	<b>ELISA</b> <b>WB</b> <b>IHC</b>
<b>Conjugation:</b>	Non-conjugated
<b>Reactivity:</b>	Human, Mouse, Rat

### Antibody Data

---

<b>Isotype:</b>	IgG
<b>Uniprot:</b>	Q9HBI5
<b>Host Species:</b>	Rabbit
<b>Purification:</b>	>95%, Protein G purified
<b>Immunogen:</b>	Recombinant Human Uncharacterized protein C3orf14 protein (9-128AA)
<b>Immunogen Species:</b>	Homo sapiens (Human)
<b>Buffer:</b>	Preservative: 0.03% Proclin 300 Constituents: 50% Glycerol, 0.01M PBS, PH 7.4
<b>Form:</b>	Liquid

**Manufacturers Statement:** This final kit system is assembled and quality-released by Assay Genie Limited.

## Preparation & Storage

**Storage:** Upon receipt, store at -20°C or -80°C. Avoid repeated freeze.

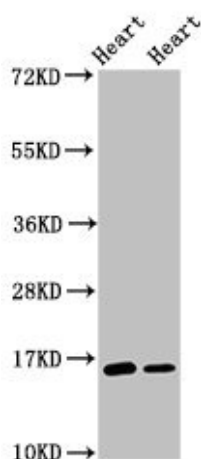
Store Bradford Reagent at Room Temperature for 1 Year.

Recommended Dilutions:	Application	Recommended Dilution
	WB	1:500-1:5000
	IHC	1:20-1:200

**Protein Quantification (Optional):** To quantify total protein levels, use the Bradford Reagent included in this kit. Visit <https://www.assaygenie.com/bradford-protein-assay-protocol/> to view the full protocol

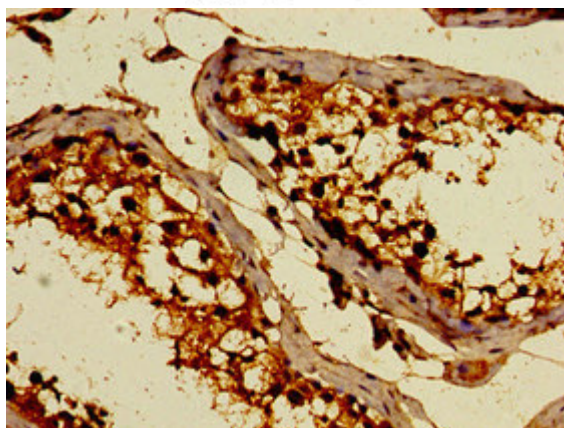
## Validation Data

### Image

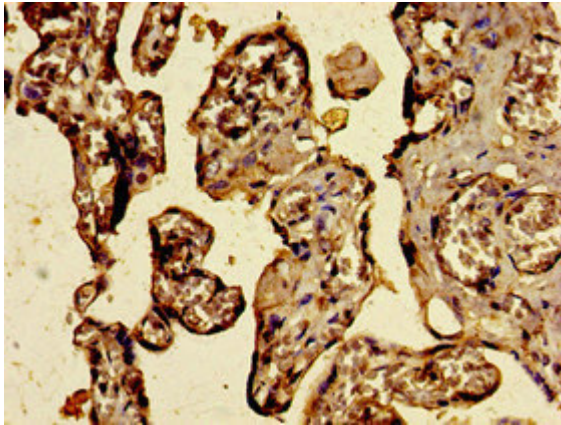


### Description

Western Blot Positive WB detected in: Rat heart tissue, Mouse heart tissue All lanes: C3orf14 antibody at 2.7µg/ml Secondary Goat polyclonal to rabbit IgG at 1/50000 dilution Predicted band size: 16 kDa Observed band size: 16 kDa



Immunohistochemistry of paraffin-embedded human testis tissue using PACO41950 at dilution of 1:100



Immunohistochemistry of paraffin-embedded human placenta tissue using PACO41950 at dilution of 1:100