

## LRTM1 Antibody

PACO41954

### Description

---

This LRTM1 Antibody is supplied as a kit for advanced applications. The kit includes Bradford Reagent to quantify total protein concentration for accurate sample normalization (Optional).

### Product Information

---

<b>SKU:</b>	PACO41954
<b>Contents:</b>	50µg Bradford Reagent: 1 vial (2ml)
<b>Category:</b>	-
<b>Synonyms:</b>	HT017 antibody, Leucine rich repeats and transmembrane domains 1 antibody, Leucine-rich repeat and transmembrane domain-containing protein 1 antibody, Lrtm1 antibody, LRTM1_HUMAN antibody
<b>Clone:</b>	Polyclonal
<b>Applications:</b>	<a href="#">ELISA</a> <a href="#">WB</a> <a href="#">IHC</a> <a href="#">IF</a>
<b>Conjugation:</b>	Non-conjugated
<b>Reactivity:</b>	Human

### Antibody Data

---

<b>Isotype:</b>	IgG
<b>Uniprot:</b>	Q9HBL6
<b>Host Species:</b>	Rabbit
<b>Purification:</b>	Antigen Affinity Purified
<b>Immunogen:</b>	Recombinant Human Leucine-rich repeat and transmembrane domain-containing protein 1 protein (1-212AA)
<b>Immunogen Species:</b>	Homo sapiens (Human)
<b>Buffer:</b>	Preservative: 0.03% Proclin 300 Constituents: 50% Glycerol, 0.01M PBS, PH 7.4
<b>Form:</b>	Liquid

**Manufacturers Statement:** This final kit system is assembled and quality-released by Assay Genie Limited.

## Preparation & Storage

**Storage:** Upon receipt, store at -20°C or -80°C. Avoid repeated freeze.  
Store Bradford Reagent at Room Temperature for 1 Year.

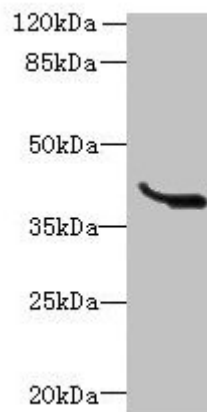
**Recommended Dilutions:**

Application	Recommended Dilution
WB	1:1000-1:5000
IHC	1:20-1:200
IF	1:10-1:100

**Protein Quantification (Optional):** To quantify total protein levels, use the Bradford Reagent included in this kit. Visit <https://www.assaygenie.com/bradford-protein-assay-protocol/> to view the full protocol

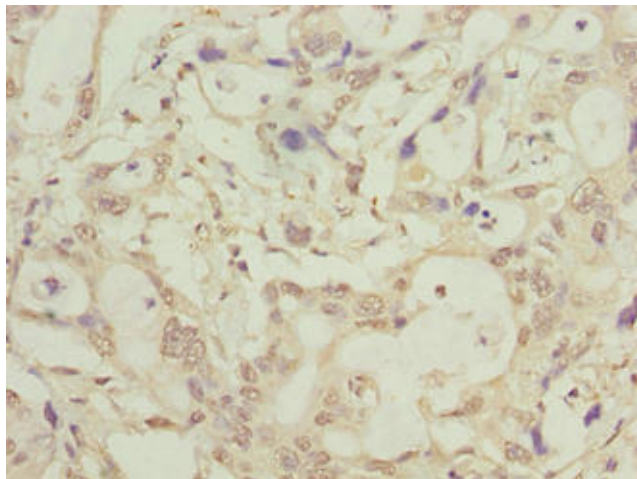
## Validation Data

**Image**

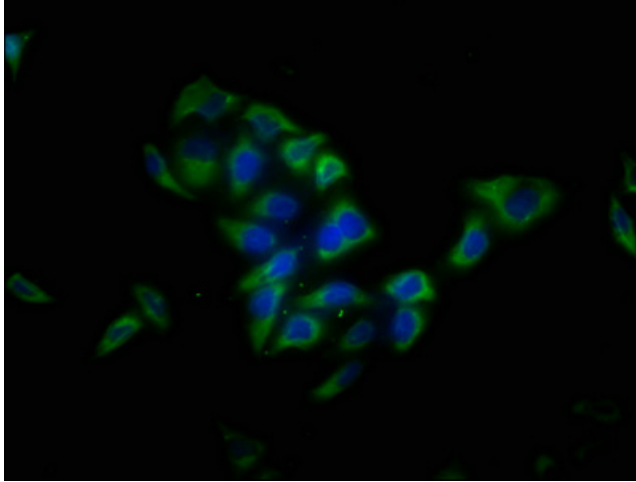


**Description**

Western blot All lanes: LRTM1 antibody at 0.4µg/ml + K562 whole cell lysate  
Secondary Goat polyclonal to rabbit IgG at 1/10000 dilution Predicted band size: 39, 30 kDa Observed band size: 39 kDa



Immunohistochemistry of paraffin-embedded human pancreatic cancer using PACO41954 at dilution of 1:100



Immunofluorescence staining of HeLa cells with PACO41954 at 1:13, counter-stained with DAPI. The cells were fixed in 4% formaldehyde, permeabilized using 0.2% Triton X-100 and blocked in 10% normal Goat Serum. The cells were then incubated with the antibody overnight at 4°C. The secondary antibody was Alexa Fluor 488-conjugated AffiniPure Goat Anti-Rabbit IgG(H+L).