

LRRC42 Antibody

PACO42730

Description

This LRRC42 Antibody is supplied as a kit for advanced applications. The kit includes Bradford Reagent to quantify total protein concentration for accurate sample normalization (Optional).

Product Information

SKU:	PACO42730
Contents:	50µg Bradford Reagent: 1 vial (2ml)
Category:	Polyclonal Antibody
Synonyms:	LRRC42 antibody, Leucine-rich repeat-containing protein 42 antibody
Clone:	Polyclonal
Applications:	ELISA WB IF
Conjugation:	Non-conjugated
Reactivity:	Human

Antibody Data

Isotype:	IgG
Uniprot:	Q9Y546
Host Species:	Rabbit
Purification:	Antigen Affinity Purified
Immunogen:	Synthesized peptide derived from part region of human protein
Immunogen Species:	Homo sapiens (Human)
Buffer:	Liquid in PBS containing 50% glycerol, and 0.02% sodium azide.
Form:	Liquid

Preparation & Storage

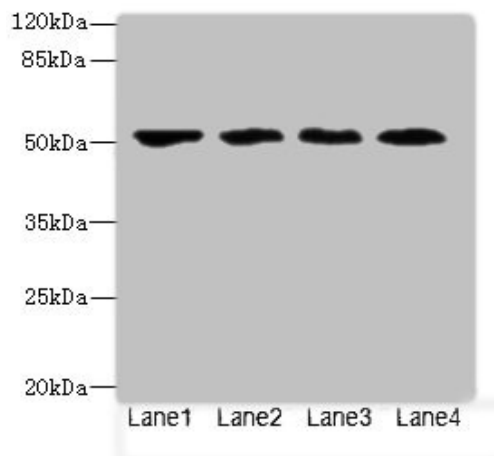
Storage: Upon receipt, store at -20°C or -80°C. Avoid repeated freeze.
Store Bradford Reagent at Room Temperature for 1 Year.

Recommended Dilutions:	Application	Recommended Dilution
	WB	1:500-1:2000
	IF	1:50-1:200

Protein Quantification (Optional): To quantify total protein levels, use the Bradford Reagent included in this kit. Visit <https://www.assaygenie.com/bradford-protein-assay-protocol/> to view the full protocol

Validation Data

Image



Description

Western blot All lanes: LRRC42 antibody at 10µg/ml
Lane 1: MCF-7 whole cell lysate Lane 2: A549 whole cell lysate Lane 3: HCT116 whole cell lysate Lane 4: Colo320 whole cell lysate Secondary Goat polyclonal to rabbit IgG at 1/10000 dilution
Predicted band size: 49 kDa Observed band size: 49 kDa