

## ATP8B1 Antibody

PACO45686

### Description

---

This ATP8B1 Antibody is supplied as a kit for advanced applications. The kit includes Bradford Reagent to quantify total protein concentration for accurate sample normalization (Optional).

### Product Information

---

<b>SKU:</b>	PACO45686
<b>Contents:</b>	50µg Bradford Reagent: 1 vial (2ml)
<b>Category:</b>	-
<b>Synonyms:</b>	AT8B1_HUMAN antibody, ATP8B1 antibody, ATPase class I type 8B member 1 antibody, ATPase, aminophospholipid transporter, class I, type 8B, member 1 antibody, ATPIC antibody, BRIC antibody, E1-E2 ATPase antibody, Familial intrahepatic cholestasis type 1 antibody, FIC1 antibody, OTTHUMP00000163615 antibody, PFIC antibody, PFIC1 antibody, Phospholipid transporting ATPase IC antibody, Probable phospholipid-transporting ATPase IC antibody
<b>Clone:</b>	Polyclonal
<b>Applications:</b>	<b>ELISA</b> <b>IF</b>
<b>Conjugation:</b>	Non-conjugated
<b>Reactivity:</b>	Human

### Antibody Data

---

<b>Isotype:</b>	IgG
<b>Uniprot:</b>	O43520
<b>Host Species:</b>	Rabbit
<b>Purification:</b>	>95%, Protein G purified
<b>Immunogen:</b>	Recombinant Human Phospholipid-transporting ATPase IC protein (217-330AA)
<b>Immunogen Species:</b>	Homo sapiens (Human)

**Manufacturers Statement:** This final kit system is assembled and quality-released by Assay Genie Limited.

**Buffer:** Preservative: 0.03% Proclin 300 Constituents: 50% Glycerol, 0.01M PBS,  
PH 7.4

**Form:** Liquid

## Preparation & Storage

---

**Storage:** Upon receipt, store at -20°C or -80°C. Avoid repeated freeze.  
Store Bradford Reagent at Room Temperature for 1 Year.

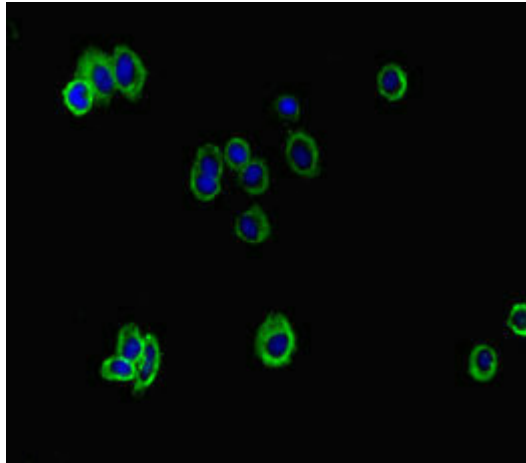
Recommended Dilutions:	Application	Recommended Dilution
	IF	1:50-1:200

**Protein Quantification (Optional):** To quantify total protein levels, use the Bradford Reagent included in this kit. Visit <https://www.assaygenie.com/bradford-protein-assay-protocol/> to view the full protocol

## Validation Data

---

**Image**



**Description**

Immunofluorescent analysis of HepG2 cells using PACO45686 at dilution of 1:100 and Alexa Fluor 488-conjugated AffiniPure Goat Anti-Rabbit IgG(H+L)