

TUBB4A Antibody

PACO46306

Description

This TUBB4A Antibody is supplied as a kit for advanced applications. The kit includes Bradford Reagent to quantify total protein concentration for accurate sample normalization (Optional).

Product Information

SKU:	PACO46306
Contents:	50µg Bradford Reagent: 1 vial (2ml)
Category:	-
Synonyms:	Beta 4 antibody, Beta 4 tubulin antibody, beta 5 antibody, beta four tubulin antibody, Dystonia 4 torsion (autosomal dominant) antibody, MC1R antibody, TBB4_HUMAN antibody, TUB B4 antibody, TUBB 4 antibody, tubb4 antibody, TUBB4A antibody, TUBB5 antibody, Tubulin 5 beta antibody, Tubulin beta 3 antibody, Tubulin beta 4 antibody, Tubulin beta 4 chain antibody, Tubulin beta 4A class IVa antibody, Tubulin beta 5 antibody, Tubulin beta IV antibody, Tubulin beta-4 chain antibody
Clone:	Polyclonal
Applications:	ELISA WB IHC IF
Conjugation:	Non-conjugated
Reactivity:	Human, Mouse

Antibody Data

Isotype:	IgG
Uniprot:	P04350
Host Species:	Rabbit
Purification:	>95%, Protein G purified
Immunogen:	Recombinant Human Tubulin beta-4A chain protein (1-444AA)
Immunogen Species:	Homo sapiens (Human)
Buffer:	Preservative: 0.03% Proclin 300 Constituents: 50% Glycerol, 0.01M PBS, PH 7.4

Manufacturers Statement: This final kit system is assembled and quality-released by Assay Genie Limited.

Form: Liquid

Preparation & Storage

Storage: Upon receipt, store at -20°C or -80°C. Avoid repeated freeze.
Store Bradford Reagent at Room Temperature for 1 Year.

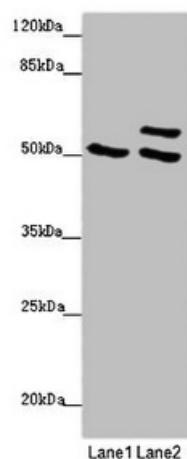
Recommended Dilutions:

Application	Recommended Dilution
WB	1:500-1:5000
IHC	1:20-1:200
IF	1:50-1:200

Protein Quantification (Optional): To quantify total protein levels, use the Bradford Reagent included in this kit. Visit <https://www.assaygenie.com/bradford-protein-assay-protocol/> to view the full protocol

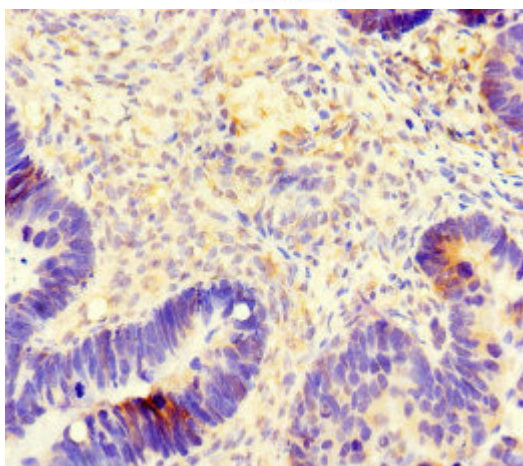
Validation Data

Image

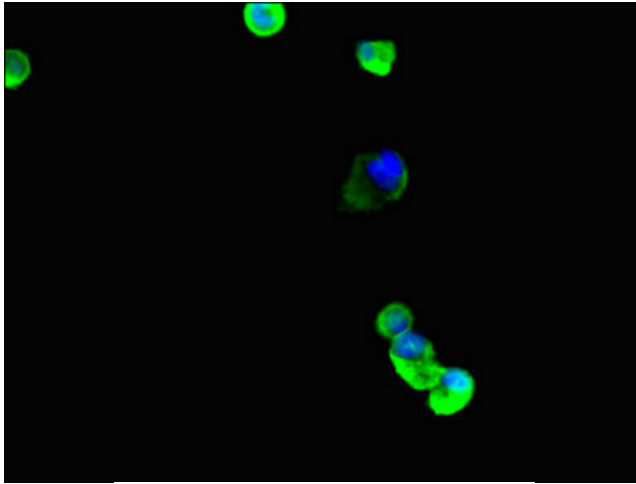


Description

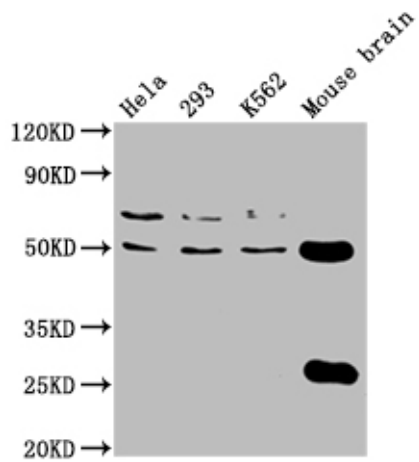
Western blot All lanes: TUBB4A antibody at 2 µg/ml Lane 1: 293T whole cell lysate Lane 2: Hela whole cell lysate Secondary Goat polyclonal to rabbit IgG at 1/10000 dilution Predicted band size: 50 kDa Observed band size: 50, 58 kDa



Immunohistochemistry of paraffin-embedded human ovarian cancer using PACO46306 at dilution of 1:100



Immunofluorescent analysis of MCF-7 cells using PACO46306 at dilution of 1:100 and Alexa Fluor 488-conjugated AffiniPure Goat Anti-Rabbit IgG(H+L)



Western Blot Positive WB detected in: HeLa whole cell lysate, 293 whole cell lysate, K562 whole cell lysate, Mouse brain tissue All lanes: TUBB4A antibody at 1:2000 Secondary Goat polyclonal to rabbit IgG at 1/50000 dilution Predicted band size: 50 kDa Observed band size: 50 kDa