

## SRGAP2C Antibody

PACO46426

### Description

---

This SRGAP2C Antibody is supplied as a kit for advanced applications. The kit includes Bradford Reagent to quantify total protein concentration for accurate sample normalization (Optional).

### Product Information

---

<b>SKU:</b>	PACO46426
<b>Contents:</b>	50µg Bradford Reagent: 1 vial (2ml)
<b>Category:</b>	-
<b>Synonyms:</b>	SLIT-ROBO Rho GTPase activating protein 2 pseudogene 1 antibody, SLIT-ROBO Rho GTPase-activating protein 2C antibody, SRG2C_HUMAN antibody, SRGAP2C antibody, SRGAP2P1 antibody
<b>Clone:</b>	Polyclonal
<b>Applications:</b>	<b>ELISA</b> <b>IHC</b> <b>IF</b>
<b>Conjugation:</b>	Non-conjugated
<b>Reactivity:</b>	Human

### Antibody Data

---

<b>Isotype:</b>	IgG
<b>Uniprot:</b>	P0DJJ0
<b>Host Species:</b>	Rabbit
<b>Purification:</b>	>95%, Protein G purified
<b>Immunogen:</b>	Recombinant Human SLIT-ROBO Rho GTPase-activating protein 2C protein (1-242AA)
<b>Immunogen Species:</b>	Homo sapiens (Human)
<b>Buffer:</b>	Preservative: 0.03% Proclin 300 Constituents: 50% Glycerol, 0.01M PBS, PH 7.4
<b>Form:</b>	Liquid

**Manufacturers Statement:** This final kit system is assembled and quality-released by Assay Genie Limited.

## Preparation & Storage

**Storage:** Upon receipt, store at -20°C or -80°C. Avoid repeated freeze.

Store Bradford Reagent at Room Temperature for 1 Year.

**Recommended Dilutions:**

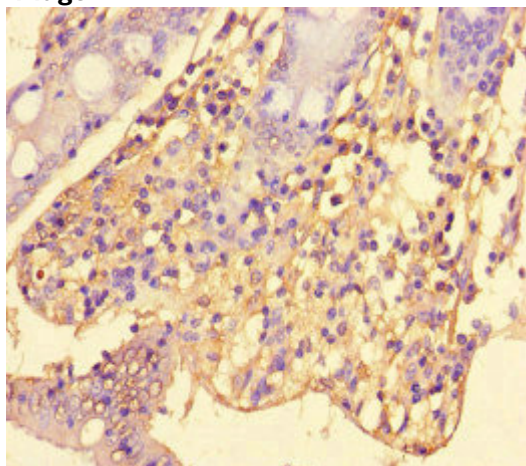
Application	Recommended Dilution
IHC	1:20-1:200
IF	1:50-1:200

**Protein Quantification (Optional):**

To quantify total protein levels, use the Bradford Reagent included in this kit. Visit <https://www.assaygenie.com/bradford-protein-assay-protocol/> to view the full protocol

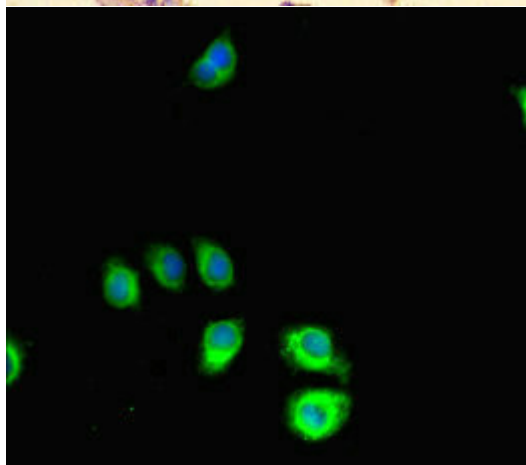
## Validation Data

**Image**



**Description**

Immunohistochemistry of paraffin-embedded human colon cancer using PACO46426 at dilution of 1:100



Immunofluorescent analysis of A549 cells using PACO46426 at dilution of 1:100 and Alexa Fluor 488-conjugated AffiniPure Goat Anti-Rabbit IgG(H+L)