

SNX14 Antibody

PACO46762

Description

This SNX14 Antibody is supplied as a kit for advanced applications. The kit includes Bradford Reagent to quantify total protein concentration for accurate sample normalization (Optional).

Product Information

| | |
|----------------------|--|
| SKU: | PACO46762 |
| Contents: | 50µg Bradford Reagent: 1 vial (2ml) |
| Category: | - |
| Synonyms: | MGC13217 antibody, RGS-PX2 antibody, RP11-321N4.2 antibody, Snx14 antibody, SNX14_HUMAN antibody, Sorting nexin 14 antibody, Sorting nexin-14 antibody |
| Clone: | Polyclonal |
| Applications: | ELISA IHC IF |
| Conjugation: | Non-conjugated |
| Reactivity: | Human |

Antibody Data

| | |
|---------------------------|---|
| Isotype: | IgG |
| Uniprot: | Q9Y5W7 |
| Host Species: | Rabbit |
| Purification: | >95%, Protein G purified |
| Immunogen: | Recombinant Human Sorting nexin-14 protein (601-893AA) |
| Immunogen Species: | Homo sapiens (Human) |
| Buffer: | Preservative: 0.03% Proclin 300 Constituents: 50% Glycerol, 0.01M PBS, PH 7.4 |
| Form: | Liquid |

Preparation & Storage

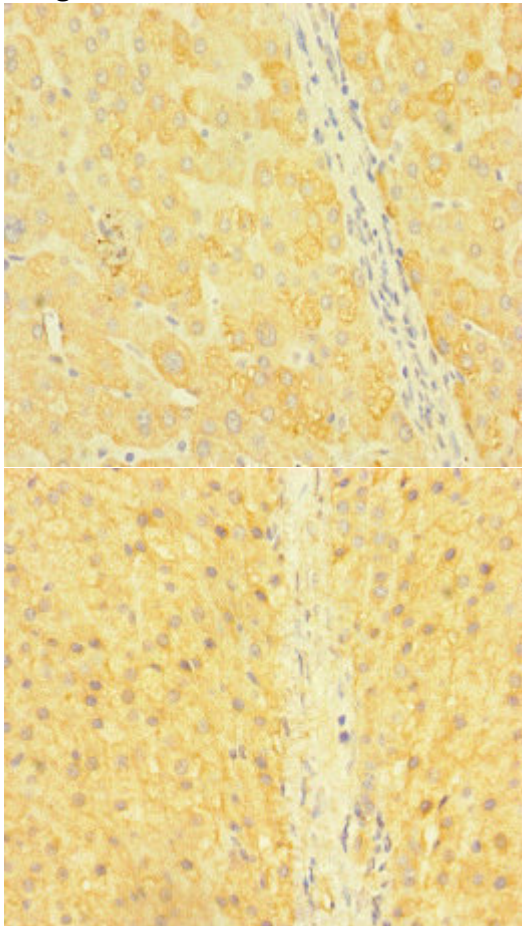
Storage: Upon receipt, store at -20°C or -80°C. Avoid repeated freeze.
Store Bradford Reagent at Room Temperature for 1 Year.

| Recommended Dilutions: | Application | Recommended Dilution |
|-------------------------------|--------------------|-----------------------------|
| | IHC | 1:20-1:200 |
| | IF | 1:50-1:200 |

Protein Quantification (Optional): To quantify total protein levels, use the Bradford Reagent included in this kit. Visit <https://www.assaygenie.com/bradford-protein-assay-protocol/> to view the full protocol

Validation Data

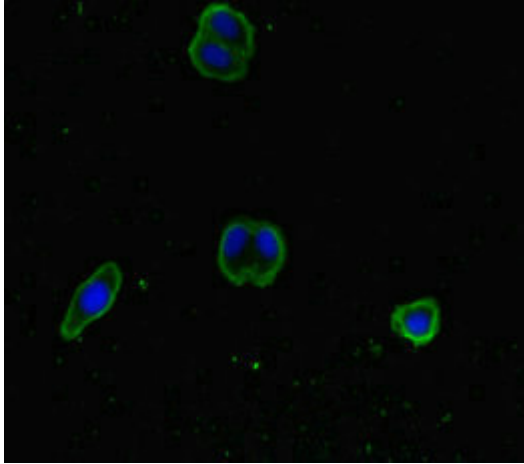
Image



Description

Immunohistochemistry of paraffin-embedded human liver tissue using PACO46762 at dilution of 1:100

Immunohistochemistry of paraffin-embedded human adrenal gland tissue using PACO46762 at dilution of 1:100



Immunofluorescent analysis of HepG2 cells using PACO46762 at dilution of 1:100 and Alexa Fluor 488-conjugated AffiniPure Goat Anti-Rabbit IgG(H+L)