

PLD6 Antibody

PACO46870

Description

This PLD6 Antibody is supplied as a kit for advanced applications. The kit includes Bradford Reagent to quantify total protein concentration for accurate sample normalization (Optional).

Product Information

SKU:	PACO46870
Contents:	50µg Bradford Reagent: 1 vial (2ml)
Category:	-
Synonyms:	Choline phosphatase 6 antibody, Mitochondrial cardiolipin hydrolase antibody, Mitochondrial phospholipase antibody, MitoPLD antibody, Phosphatidylcholine hydrolyzing phospholipase D6 antibody, Phosphatidylcholine-hydrolyzing phospholipase D6 antibody, Phospholipase D family member 6 antibody, Phospholipase D6 antibody, PLD 6 antibody, pld6 antibody, PLD6_HUMAN antibody, Protein zucchini homolog antibody, ZUC antibody, Zucchini, Drosophila, homolog of antibody
Clone:	Polyclonal
Applications:	ELISA WB IHC IF
Conjugation:	Non-conjugated
Reactivity:	Human, Mouse

Antibody Data

Isotype:	IgG
Uniprot:	Q8N2A8
Host Species:	Rabbit
Purification:	>95%, Protein G purified
Immunogen:	Recombinant Human Mitochondrial cardiolipin hydrolase protein (1-252AA)
Immunogen Species:	Homo sapiens (Human)

Manufacturers Statement: This final kit system is assembled and quality-released by Assay Genie Limited.

Buffer: Preservative: 0.03% Proclin 300 Constituents: 50% Glycerol, 0.01M PBS,
PH 7.4

Form: Liquid

Preparation & Storage

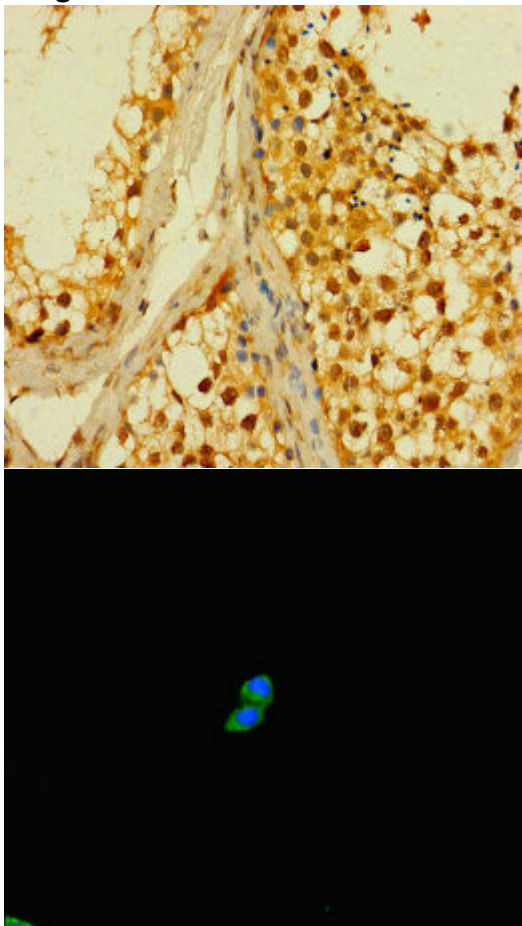
Storage: Upon receipt, store at -20°C or -80°C. Avoid repeated freeze.
Store Bradford Reagent at Room Temperature for 1 Year.

Recommended Dilutions:	Application	Recommended Dilution
	WB	1:2000-1:5000
	IHC	1:20-1:200
	IF	1:50-1:200

Protein Quantification (Optional): To quantify total protein levels, use the Bradford Reagent included in this kit. Visit <https://www.assaygenie.com/bradford-protein-assay-protocol/> to view the full protocol

Validation Data

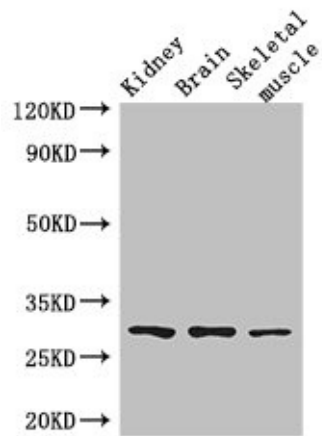
Image



Description

Immunohistochemistry of paraffin-embedded human testis tissue using PACO46870 at dilution of 1:100

Immunofluorescent analysis of HepG2 cells using PACO46870 at dilution of 1:100 and Alexa Fluor 488-conjugated AffiniPure Goat Anti-Rabbit IgG(H+L)



Western Blot Positive WB detected in: Mouse kidney tissue, Mouse brain tissue, Mouse skeletal muscle tissue All lanes: PLD6 antibody at 2.5µg/ml Secondary Goat polyclonal to rabbit IgG at 1/50000 dilution Predicted band size: 29 kDa Observed band size: 29 kDa