

CCDC8 Antibody

PACO47138

Description

This CCDC8 Antibody is supplied as a kit for advanced applications. The kit includes Bradford Reagent to quantify total protein concentration for accurate sample normalization (Optional).

Product Information

SKU:	PACO47138
Contents:	50µg Bradford Reagent: 1 vial (2ml)
Category:	-
Synonyms:	CCDC8 antibody, CCDC8_HUMAN antibody, Coiled coil domain containing 8 antibody, Coiled-coil domain-containing protein 8 antibody, DKFZp564K0322 antibody, ENSMUSG00000041117 antibody, MGC72567 antibody
Clone:	Polyclonal
Applications:	ELISA WB IF
Conjugation:	Non-conjugated
Reactivity:	Human, Mouse

Antibody Data

Isotype:	IgG
Uniprot:	Q9H0W5
Host Species:	Rabbit
Purification:	>95%, Protein G purified
Immunogen:	Recombinant Human Coiled-coil domain-containing protein 8 protein (214-513AA)
Immunogen Species:	Homo sapiens (Human)
Buffer:	Preservative: 0.03% Proclin 300 Constituents: 50% Glycerol, 0.01M PBS, PH 7.4
Form:	Liquid

Manufacturers Statement: This final kit system is assembled and quality-released by Assay Genie Limited.

Preparation & Storage

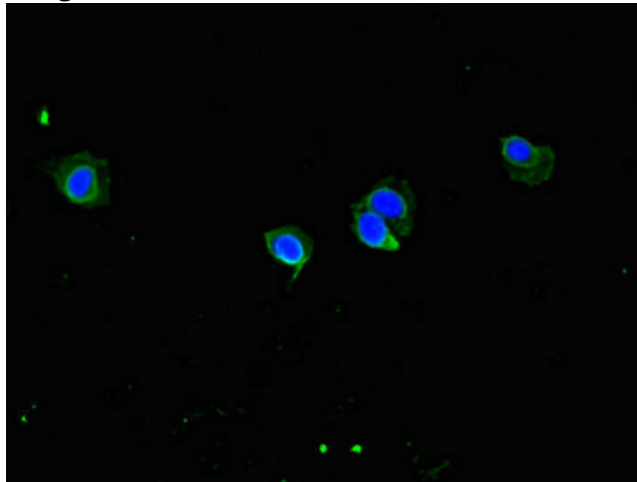
Storage: Upon receipt, store at -20°C or -80°C. Avoid repeated freeze.
Store Bradford Reagent at Room Temperature for 1 Year.

Recommended Dilutions:	Application	Recommended Dilution
	WB	1:2000-1:5000
	IF	1:50-1:200

Protein Quantification (Optional): To quantify total protein levels, use the Bradford Reagent included in this kit. Visit <https://www.assaygenie.com/bradford-protein-assay-protocol/> to view the full protocol

Validation Data

Image



Description

Immunofluorescent analysis of HeLa cells using PACO47138 at dilution of 1:100 and Alexa Fluor 488-conjugated AffiniPure Goat Anti-Rabbit IgG(H+L)



Western Blot Positive WB detected in: Mouse liver tissue All lanes: CCDC8 antibody at 3µg/ml Secondary Goat polyclonal to rabbit IgG at 1/50000 dilution Predicted band size: 60 kDa Observed band size: 60 kDa