

## LRCH1 Antibody

PACO47266

### Description

---

This LRCH1 Antibody is supplied as a kit for advanced applications. The kit includes Bradford Reagent to quantify total protein concentration for accurate sample normalization (Optional).

### Product Information

---

<b>SKU:</b>	PACO47266
<b>Contents:</b>	50µg Bradford Reagent: 1 vial (2ml)
<b>Category:</b>	-
<b>Synonyms:</b>	LRCH1 antibody, CHDC1 antibody, KIAA1016 antibody, Leucine-rich repeat and calponin homology domain-containing protein 1 antibody, Calponin homology domain-containing protein 1 antibody, Neuronal protein 81 antibody, NP81 antibody
<b>Clone:</b>	Polyclonal
<b>Applications:</b>	<b>ELISA</b> <b>WB</b> <b>IHC</b> <b>IF</b>
<b>Conjugation:</b>	Non-conjugated
<b>Reactivity:</b>	Human

### Antibody Data

---

<b>Isotype:</b>	IgG
<b>Uniprot:</b>	Q9Y2L9
<b>Host Species:</b>	Rabbit
<b>Purification:</b>	>95%, Protein G purified
<b>Immunogen:</b>	Recombinant Human Leucine-rich repeat and calponin homology domain-containing protein 1 protein (1-105AA)
<b>Immunogen Species:</b>	Homo sapiens (Human)
<b>Buffer:</b>	Preservative: 0.03% Proclin 300 Constituents: 50% Glycerol, 0.01M PBS, PH 7.4
<b>Form:</b>	Liquid

## Preparation & Storage

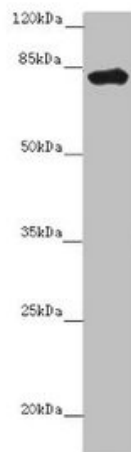
**Storage:** Upon receipt, store at -20°C or -80°C. Avoid repeated freeze. Store Bradford Reagent at Room Temperature for 1 Year.

<b>Recommended Dilutions:</b>	<b>Application</b>	<b>Recommended Dilution</b>
	WB	1:1000-1:5000
	IHC	1:20-1:200
	IF	1:50-1:200

**Protein Quantification (Optional):** To quantify total protein levels, use the Bradford Reagent included in this kit. Visit <https://www.assaygenie.com/bradford-protein-assay-protocol/> to view the full protocol

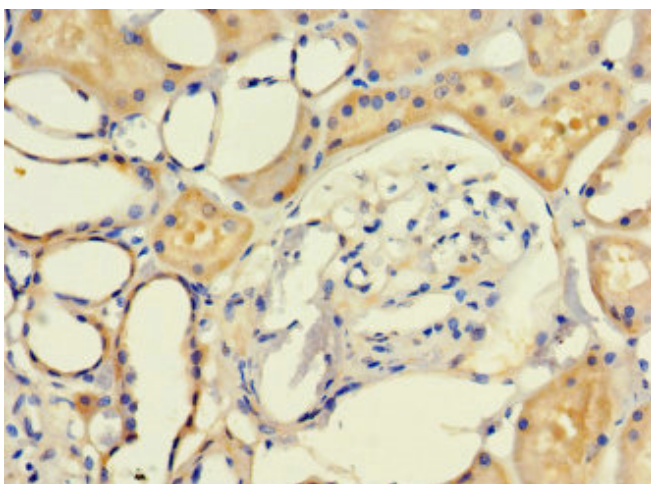
## Validation Data

### Image

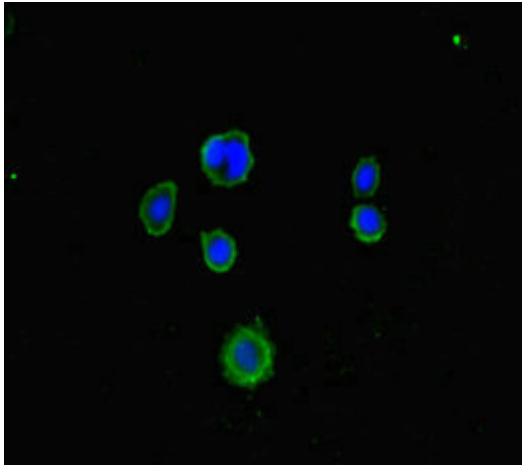


### Description

Western blot All lanes: LRCH1 antibody at 15µg/ml + Hela whole cell lysate Secondary Goat polyclonal to rabbit IgG at 1/10000 dilution Predicted band size: 81, 78, 85 kDa Observed band size: 81 kDa



Immunohistochemistry of paraffin-embedded human kidney tissue using PACO47266 at dilution of 1:100



Immunofluorescent analysis of MCF-7 cells using PACO47266 at dilution of 1:100 and Alexa Fluor 488-conjugated AffiniPure Goat Anti-Rabbit IgG(H+L)