

FBXL22 Antibody

PACO47962

Description

This FBXL22 Antibody is supplied as a kit for advanced applications. The kit includes Bradford Reagent to quantify total protein concentration for accurate sample normalization (Optional).

Product Information

SKU:	PACO47962
Contents:	50µg Bradford Reagent: 1 vial (2ml)
Category:	-
Synonyms:	FBXL22F-box and leucine-rich protein 22 antibody
Clone:	Polyclonal
Applications:	ELISA WB IHC IF
Conjugation:	Non-conjugated
Reactivity:	Human, Mouse

Antibody Data

Isotype:	IgG
Uniprot:	Q6P050
Host Species:	Rabbit
Purification:	>95%, Protein G purified
Immunogen:	Recombinant Human F-box and leucine-rich protein 22 protein (123-229AA)
Immunogen Species:	Homo sapiens (Human)
Buffer:	Preservative: 0.03% Proclin 300 Constituents: 50% Glycerol, 0.01M PBS, PH 7.4
Form:	Liquid

Manufacturers Statement: This final kit system is assembled and quality-released by Assay Genie Limited.

Preparation & Storage

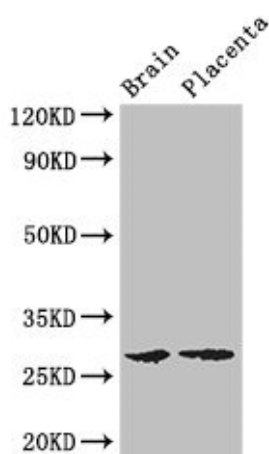
Storage: Upon receipt, store at -20°C or -80°C. Avoid repeated freeze.
Store Bradford Reagent at Room Temperature for 1 Year.

Recommended Dilutions:	Application	Recommended Dilution
	WB	1:1000-1:5000
	IHC	1:20-1:200
	IF	1:50-1:200

Protein Quantification (Optional): To quantify total protein levels, use the Bradford Reagent included in this kit. Visit <https://www.assaygenie.com/bradford-protein-assay-protocol/> to view the full protocol

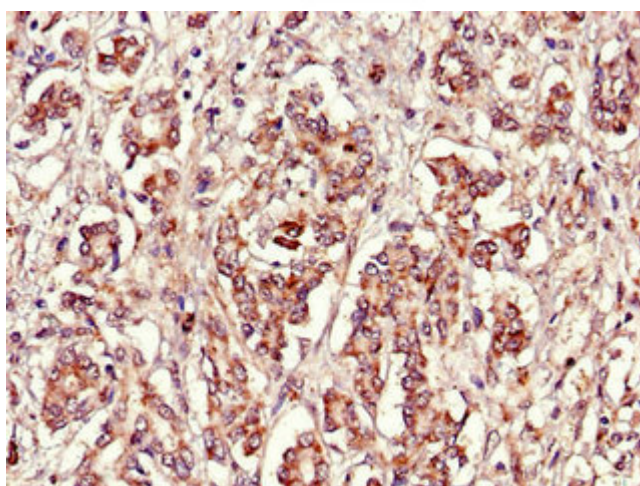
Validation Data

Image

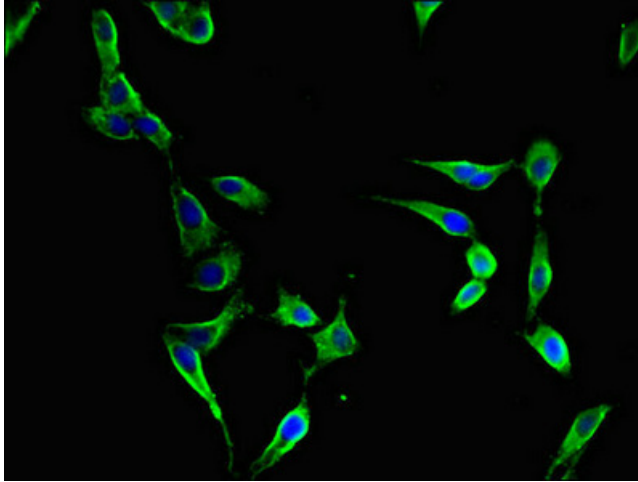


Description

Western Blot Positive WB detected in: Mouse brain tissue, Human placenta tissue All lanes: FBXL22 antibody at 3µg/ml Secondary Goat polyclonal to rabbit IgG at 1/50000 dilution Predicted band size: 28 kDa Observed band size: 28 kDa



Immunohistochemistry of paraffin-embedded human pancreatic cancer using PACO47962 at dilution of 1:100



Immunofluorescent analysis of HeLa cells using PACO47962 at dilution of 1:100 and Alexa Fluor 488-conjugated AffiniPure Goat Anti-Rabbit IgG(H+L)