

## SPPL3 Antibody

PACO48706

### Description

---

This SPPL3 Antibody is supplied as a kit for advanced applications. The kit includes Bradford Reagent to quantify total protein concentration for accurate sample normalization (Optional).

### Product Information

---

|                      |   |
|----------------------|---|
| <b>SKU:</b>          | PACO48706   |
| <b>Contents:</b>     | 50µg<br>Bradford Reagent: 1 vial (2ml)  |
| <b>Category:</b>     | Polyclonal Antibody   |
| <b>Synonyms:</b>     | SPPL3 antibody, IMP2 antibody, PSL4 antibody, Signal peptide peptidase-like 3 antibody, SPP-like 3 antibody, EC 3.4.23.- antibody, Intramembrane protease 2 antibody, IMP-2 antibody, Presenilin homologous protein 1 antibody, PSH1 antibody, Presenilin-like protein 4 antibody |
| <b>Clone:</b>        | Polyclonal  |
| <b>Applications:</b> | <a href="#">ELISA</a> <a href="#">WB</a>  |
| <b>Conjugation:</b>  | Non-conjugated  |
| <b>Reactivity:</b>   | Human, Mouse  |

### Antibody Data

---

|                           |   |
|---------------------------|---|
| <b>Isotype:</b>           | IgG   |
| <b>Uniprot:</b>           | Q8TCT6  |
| <b>Host Species:</b>      | Rabbit  |
| <b>Purification:</b>      | >95%, Protein G purified  |
| <b>Immunogen:</b>         | Recombinant Human Signal peptide peptidase-like 3 protein (213-263AA)         |
| <b>Immunogen Species:</b> | Homo sapiens (Human)  |
| <b>Buffer:</b>            | Preservative: 0.03% Proclin 300 Constituents: 50% Glycerol, 0.01M PBS, PH 7.4 |
| <b>Form:</b>              | Liquid  |

## Preparation & Storage

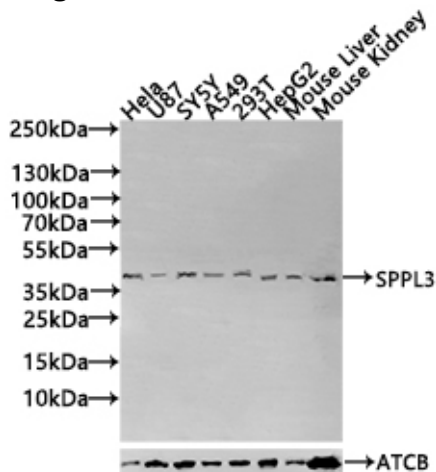
**Storage:** Upon receipt, store at -20°C or -80°C. Avoid repeated freeze.  
Store Bradford Reagent at Room Temperature for 1 Year.

| Recommended Dilutions: | Application | Recommended Dilution |
|------------------------|-------------|----------------------|
|                        | WB          | 1:500-1:2000         |

**Protein Quantification (Optional):** To quantify total protein levels, use the Bradford Reagent included in this kit. Visit <https://www.assaygenie.com/bradford-protein-assay-protocol/> to view the full protocol

## Validation Data

### Image



### Description

Western Blot Positive WB detected in: HeLa whole cell lysate(30µg), U87 whole cell lysate(30µg), SY5Y whole cell lysate(30µg), A549 whole cell lysate(30µg), 293T whole cell lysate(30µg), HepG2 whole cell lysate(30µg), Mouse Liver tissue lysate(30µg), Mouse Kidney tissue lysate(30µg) All lanes: SPPL3 antibody at 1:1000 Secondary Goat polyclonal to rabbit IgG at 1/40000 dilution Predicted band size: 43,19 kDa Observed band size: 43 kDa Exposure time: 120s