

## ATP8A2 Antibody

PACO48730

### Description

---

This ATP8A2 Antibody is supplied as a kit for advanced applications. The kit includes Bradford Reagent to quantify total protein concentration for accurate sample normalization (Optional).

### Product Information

---

<b>SKU:</b>	PACO48730
<b>Contents:</b>	50µg Bradford Reagent: 1 vial (2ml)
<b>Category:</b>	-
<b>Synonyms:</b>	AT8A2_HUMAN antibody, ATP antibody, Atp8a2 antibody, ATPase aminophospholipid transporter class I type 8A member 2 antibody, ATPase aminophospholipid transporter like class I type 8A member 2 antibody, ATPase class I type 8A member 2 antibody, ATPase phospholipid transporting 8A2 antibody, ATPIB antibody, CAMRQ4 antibody, EC=3.6.3.1 antibody, IB antibody, ML-1 antibody, ML1 antibody, P4 ATPase flippase complex alpha subunit ATP8A2 antibody, Probable phospholipid-transporting ATPase IB antibody
<b>Clone:</b>	Polyclonal
<b>Applications:</b>	<b>ELISA</b> <b>IHC</b> <b>IF</b>
<b>Conjugation:</b>	Non-conjugated
<b>Reactivity:</b>	Human

### Antibody Data

---

<b>Isotype:</b>	IgG
<b>Uniprot:</b>	Q9NTI2
<b>Host Species:</b>	Rabbit
<b>Purification:</b>	>95%, Protein G purified
<b>Immunogen:</b>	Recombinant Human Phospholipid-transporting ATPase IB protein (358-570AA)
<b>Immunogen Species:</b>	Homo sapiens (Human)

**Manufacturers Statement:** This final kit system is assembled and quality-released by Assay Genie Limited.

**Buffer:** Preservative: 0.03% Proclin 300 Constituents: 50% Glycerol, 0.01M PBS,  
PH 7.4

**Form:** Liquid

## Preparation & Storage

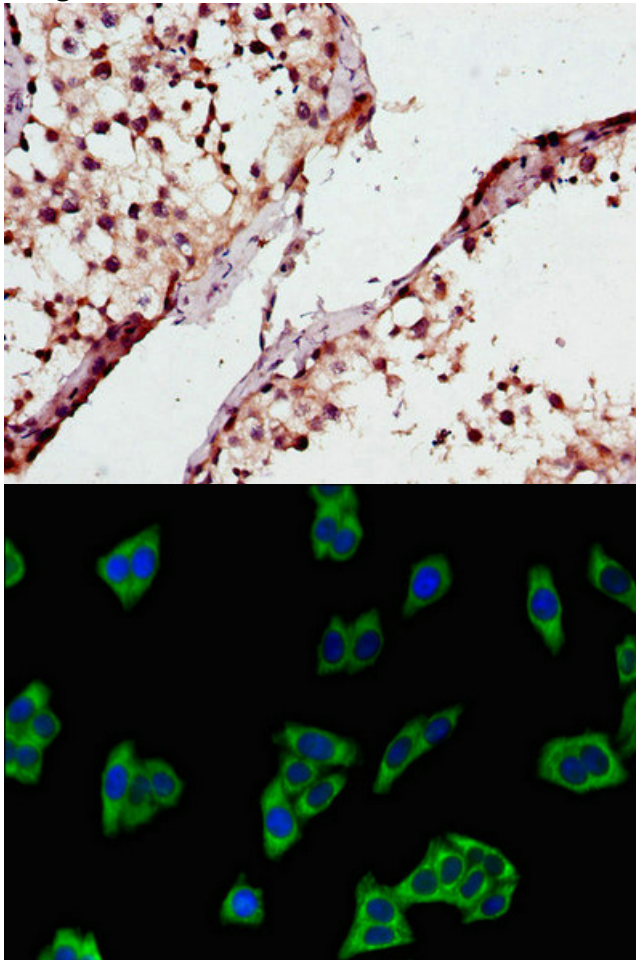
**Storage:** Upon receipt, store at -20°C or -80°C. Avoid repeated freeze.  
Store Bradford Reagent at Room Temperature for 1 Year.

Recommended Dilutions:	Application	Recommended Dilution
	IHC	1:20-1:200
	IF	1:50-1:200

**Protein Quantification (Optional):** To quantify total protein levels, use the Bradford Reagent included in this kit. Visit <https://www.assaygenie.com/bradford-protein-assay-protocol/> to view the full protocol

## Validation Data

**Image**



**Description**

Immunohistochemistry of paraffin-embedded human testis tissue using PACO48730 at dilution of 1:100

Immunofluorescent analysis of HepG2 cells using PACO48730 at dilution of 1:100 and Alexa Fluor 488-conjugated AffiniPure Goat Anti-Rabbit IgG(H+L)