

BETV4 Antibody

PACO50214

Description

This BETV4 Antibody is supplied as a kit for advanced applications. The kit includes Bradford Reagent to quantify total protein concentration for accurate sample normalization (Optional).

Product Information

SKU:	PACO50214
Contents:	50µg Bradford Reagent: 1 vial (2ml)
Category:	-
Synonyms:	BETV4 antibody, Polcalcin Bet v 4 antibody, Calcium-binding pollen allergen Bet v 4 antibody, allergen Bet v 4 antibody
Clone:	Polyclonal
Applications:	ELISA WB
Conjugation:	Non-conjugated
Reactivity:	Betula pendula

Antibody Data

Isotype:	IgG
Uniprot:	Q39419
Host Species:	Rabbit
Purification:	>95%, Protein G purified
Immunogen:	Recombinant Betula pendula Polcalcin Bet v 4 protein (1-85AA)
Immunogen Species:	Betula pendula
Buffer:	Preservative: 0.03% Proclin 300 Constituents: 50% Glycerol, 0.01M PBS, pH 7.4
Form:	Liquid

Manufacturers Statement: This final kit system is assembled and quality-released by Assay Genie Limited.

Preparation & Storage

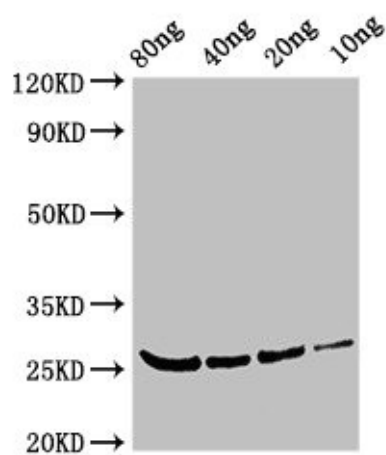
Storage: Upon receipt, store at -20°C or -80°C. Avoid repeated freeze.
Store Bradford Reagent at Room Temperature for 1 Year.

Recommended Dilutions:	Application	Recommended Dilution
	WB	1:500-1:5000

Protein Quantification (Optional): To quantify total protein levels, use the Bradford Reagent included in this kit. Visit <https://www.assaygenie.com/bradford-protein-assay-protocol/> to view the full protocol

Validation Data

Image



Description

Western Blot Positive WB detected in Recombinant protein All lanes: BETV4 antibody at 3µg/ml Secondary Goat polyclonal to rabbit IgG at 1/50000 dilution predicted band size: 26 kDa observed band size: 26 kDa