

## PRSS56 Antibody

PACO50266

### Description

---

This PRSS56 Antibody is supplied as a kit for advanced applications. The kit includes Bradford Reagent to quantify total protein concentration for accurate sample normalization (Optional).

### Product Information

---

<b>SKU:</b>	PACO50266
<b>Contents:</b>	50µg Bradford Reagent: 1 vial (2ml)
<b>Category:</b>	-
<b>Synonyms:</b>	PRSS56 antibody, Serine protease 56 antibody, EC 3.4.21.- antibody
<b>Clone:</b>	Polyclonal
<b>Applications:</b>	<a href="#">ELISA</a> <a href="#">WB</a> <a href="#">IHC</a>
<b>Conjugation:</b>	Non-conjugated
<b>Reactivity:</b>	Human, Rat

### Antibody Data

---

<b>Isotype:</b>	IgG
<b>Uniprot:</b>	P0CW18
<b>Host Species:</b>	Rabbit
<b>Purification:</b>	>95%, Protein G purified
<b>Immunogen:</b>	Recombinant Human Serine protease 56 protein (36-116AA)
<b>Immunogen Species:</b>	Homo sapiens (Human)
<b>Buffer:</b>	Preservative: 0.03% Proclin 300 Constituents: 50% Glycerol, 0.01M PBS, pH 7.4
<b>Form:</b>	Liquid

**Manufacturers Statement:** This final kit system is assembled and quality-released by Assay Genie Limited.

## Preparation & Storage

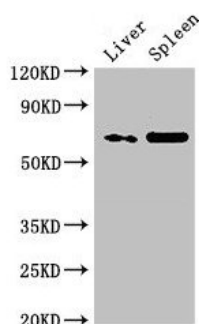
**Storage:** Upon receipt, store at -20°C or -80°C. Avoid repeated freeze.  
Store Bradford Reagent at Room Temperature for 1 Year.

Recommended Dilutions:	Application	Recommended Dilution
	WB	1:500-1:5000
	IHC	1:20-1:200

**Protein Quantification (Optional):** To quantify total protein levels, use the Bradford Reagent included in this kit. Visit <https://www.assaygenie.com/bradford-protein-assay-protocol/> to view the full protocol

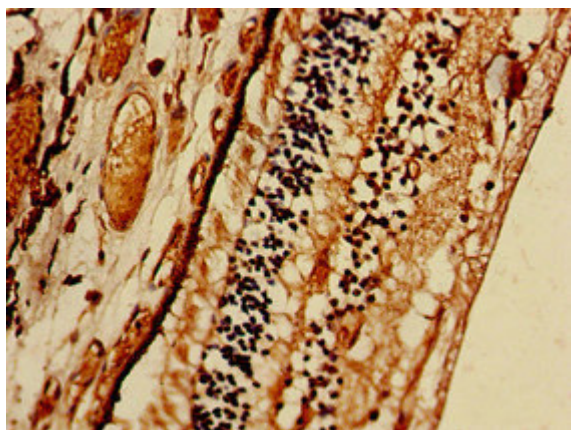
## Validation Data

### Image



### Description

Western Blot Positive WB detected in: Rat liver tissue, Rat spleen tissue All lanes: PRSS56 antibody at 3µg/ml Secondary Goat polyclonal to rabbit IgG at 1/50000 dilution Predicted band size: 65 kDa Observed band size: 65 kDa



Immunohistochemistry of paraffin-embedded human eye tissue using PACO50266 at dilution of 1:100