

pepF Antibody

PACO50330

Description

This pepF Antibody is supplied as a kit for advanced applications. The kit includes Bradford Reagent to quantify total protein concentration for accurate sample normalization (Optional).

Product Information

| | |
|----------------------|---|
| SKU: | PACO50330 |
| Contents: | 50µg Bradford Reagent: 1 vial (2ml) |
| Category: | - |
| Synonyms: | pepF antibody, MPN_197 antibody, MP634Oligoendopeptidase F homolog antibody, EC 3.4.24.- antibody |
| Clone: | Polyclonal |
| Applications: | ELISA WB |
| Conjugation: | Non-conjugated |
| Reactivity: | Mycoplasma pneumoniae |

Antibody Data

| | |
|---------------------------|--|
| Isotype: | IgG |
| Uniprot: | P54125 |
| Host Species: | Rabbit |
| Purification: | >95%, Protein G purified |
| Immunogen: | Recombinant Mycoplasma pneumoniae Oligoendopeptidase F homolog protein (1-210AA) |
| Immunogen Species: | Mycoplasma pneumoniae |
| Buffer: | Preservative: 0.03% Proclin 300 Constituents: 50% Glycerol, 0.01M PBS, pH 7.4 |
| Form: | Liquid |

Preparation & Storage

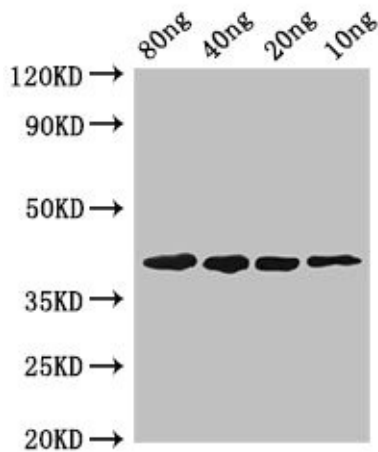
Storage: Upon receipt, store at -20°C or -80°C. Avoid repeated freeze.
Store Bradford Reagent at Room Temperature for 1 Year.

| Recommended Dilutions: | Application | Recommended Dilution |
|------------------------|-------------|----------------------|
| | WB | 1:500-1:5000 |

Protein Quantification (Optional): To quantify total protein levels, use the Bradford Reagent included in this kit. Visit <https://www.assaygenie.com/bradford-protein-assay-protocol/> to view the full protocol

Validation Data

Image



Description

Western Blot Positive WB detected in Recombinant protein All lanes: pepF antibody at 2.8µg/ml Secondary Goat polyclonal to rabbit IgG at 1/50000 dilution predicted band size: 40 kDa observed band size: 40 kDa