

CPEB2 Antibody

PACO50714

Description

This CPEB2 Antibody is supplied as a kit for advanced applications. The kit includes Bradford Reagent to quantify total protein concentration for accurate sample normalization (Optional).

Product Information

SKU:	PACO50714
Contents:	50µg Bradford Reagent: 1 vial (2ml)
Category:	-
Synonyms:	CPEB2Cytoplasmic polyadenylation element-binding protein 2 antibody, CPE-BP2 antibody, CPE-binding protein 2 antibody, hCPEB-2 antibody
Clone:	Polyclonal
Applications:	ELISA WB IF
Conjugation:	Non-conjugated
Reactivity:	Human, Mouse, Rat

Antibody Data

Isotype:	IgG
Uniprot:	Q7Z5Q1
Host Species:	Rabbit
Purification:	>95%, Protein G purified
Immunogen:	Recombinant Human Cytoplasmic polyadenylation element-binding protein 2 protein (167-308AA)
Immunogen Species:	Homo sapiens (Human)
Buffer:	Preservative: 0.03% Proclin 300 Constituents: 50% Glycerol, 0.01M PBS, pH 7.4
Form:	Liquid

Preparation & Storage

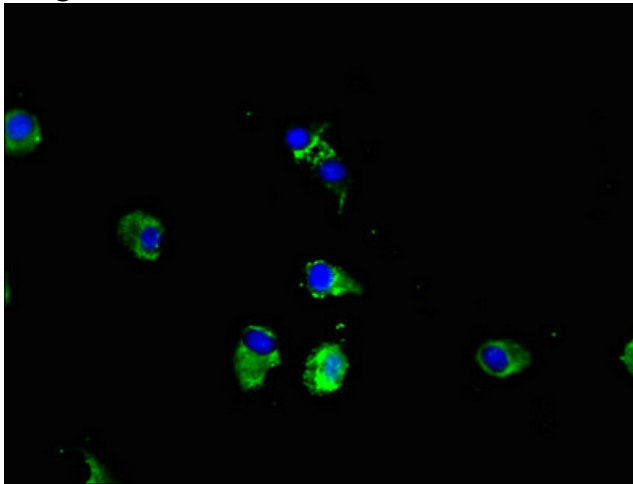
Storage: Upon receipt, store at -20°C or -80°C. Avoid repeated freeze. Store Bradford Reagent at Room Temperature for 1 Year.

Recommended Dilutions:	Application	Recommended Dilution
	WB	1:500-1:5000
	IF	1:50-1:200

Protein Quantification (Optional): To quantify total protein levels, use the Bradford Reagent included in this kit. Visit <https://www.assaygenie.com/bradford-protein-assay-protocol/> to view the full protocol

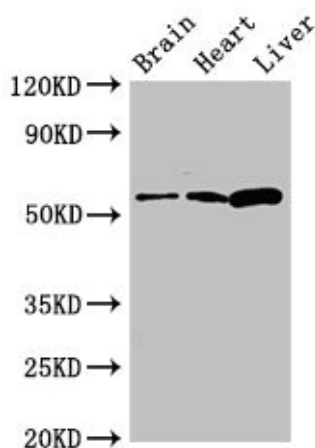
Validation Data

Image



Description

Immunofluorescent analysis of HeLa cells using PACO50714 at dilution of 1:100 and Alexa Fluor 488-conjugated AffiniPure Goat Anti-Rabbit IgG(H+L)



Western Blot Positive WB detected in: Mouse brain tissue, Rat heart tissue, Rat liver tissue All lanes: CPEB2 antibody at 2.7µg/ml Secondary Goat polyclonal to rabbit IgG at 1/50000 dilution Predicted band size: 65, 63, 62, 107, 110 kDa Observed band size: 65 kDa