

## APOPT1 Antibody

PACO50902

### Description

---

This APOPT1 Antibody is supplied as a kit for advanced applications. The kit includes Bradford Reagent to quantify total protein concentration for accurate sample normalization (Optional).

### Product Information

---

|                      |  |
|----------------------|--|
| <b>SKU:</b>          | PACO50902  |
| <b>Contents:</b>     | 50µg<br>Bradford Reagent: 1 vial (2ml)   |
| <b>Category:</b>     | -  |
| <b>Synonyms:</b>     | APOP-1 antibody, APOP1 antibody, APOP1_HUMAN antibody, Apopt1 antibody, Apoptogenic 1 mitochondrial antibody, Apoptogenic protein 1 antibody, Apoptogenic protein 1 mitochondrial antibody, C14orf153 antibody, mitochondrial antibody, UPF0671 protein C14orf153 antibody |
| <b>Clone:</b>        | Polyclonal   |
| <b>Applications:</b> | <b>ELISA</b> <b>WB</b>   |
| <b>Conjugation:</b>  | Non-conjugated   |
| <b>Reactivity:</b>   | Human, Mouse   |

### Antibody Data

---

|                           |   |
|---------------------------|---|
| <b>Isotype:</b>           | IgG   |
| <b>Uniprot:</b>           | Q96IL0  |
| <b>Host Species:</b>      | Rabbit  |
| <b>Purification:</b>      | >95%, Protein G purified  |
| <b>Immunogen:</b>         | Recombinant Human Apoptogenic protein 1, mitochondrial protein (40-150AA)     |
| <b>Immunogen Species:</b> | Homo sapiens (Human)  |
| <b>Buffer:</b>            | Preservative: 0.03% Proclin 300 Constituents: 50% Glycerol, 0.01M PBS, pH 7.4 |
| <b>Form:</b>              | Liquid  |

**Manufacturers Statement:** This final kit system is assembled and quality-released by Assay Genie Limited.

## Preparation & Storage

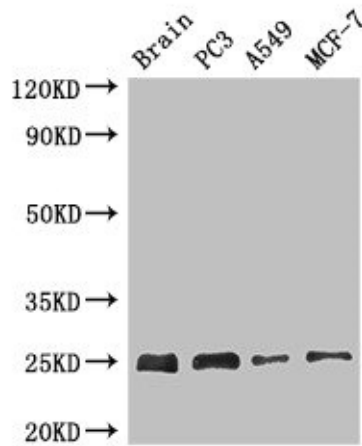
**Storage:** Upon receipt, store at -20°C or -80°C. Avoid repeated freeze. Store Bradford Reagent at Room Temperature for 1 Year.

| Recommended Dilutions: | Application | Recommended Dilution |
|------------------------|-------------|----------------------|
|                        | WB          | 1:500-1:5000         |

**Protein Quantification (Optional):** To quantify total protein levels, use the Bradford Reagent included in this kit. Visit <https://www.assaygenie.com/bradford-protein-assay-protocol/> to view the full protocol

## Validation Data

### Image



### Description

Western Blot Positive WB detected in: Mouse brain tissue, PC-3 whole cell lysate, A549 whole cell lysate, MCF-7 whole cell lysate All lanes: APOPT1 antibody at 2.7µg/ml Secondary Goat polyclonal to rabbit IgG at 1/50000 dilution predicted band size: 25 kDa observed band size: 25 kDa