

YIPF3 Antibody

PACO51010

Description

This YIPF3 Antibody is supplied as a kit for advanced applications. The kit includes Bradford Reagent to quantify total protein concentration for accurate sample normalization (Optional).

Product Information

SKU:	PACO51010
Contents:	50µg Bradford Reagent: 1 vial (2ml)
Category:	Polyclonal Antibody
Synonyms:	YIPF3, C6orf109, KLIP1, Protein YIPF3, Killer lineage protein 1, Natural killer cell-specific antigen KLIP1, YIP1 family member 3
Clone:	Polyclonal
Applications:	ELISA WB
Conjugation:	Non-conjugated
Reactivity:	Human, Mouse

Antibody Data

Isotype:	IgG
Uniprot:	Q9GZM5
Host Species:	Rabbit
Purification:	>95%, Protein G purified
Immunogen:	Recombinant Human Protein YIPF3 protein (2-148AA)
Immunogen Species:	Homo sapiens (Human)
Buffer:	Preservative: 0.03% Proclin 300 Constituents: 50% Glycerol, 0.01M PBS, pH 7.4
Form:	Liquid

Manufacturers Statement: This final kit system is assembled and quality-released by Assay Genie Limited.

Preparation & Storage

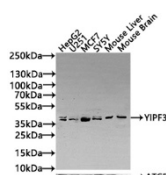
Storage: Upon receipt, store at -20°C or -80°C. Avoid repeated freeze.
Store Bradford Reagent at Room Temperature for 1 Year.

Recommended Dilutions:	Application	Recommended Dilution
	WB	1:500-1:2000

Protein Quantification (Optional): To quantify total protein levels, use the Bradford Reagent included in this kit. Visit <https://www.assaygenie.com/bradford-protein-assay-protocol/> to view the full protocol

Validation Data

Image



Description

Western Blot Positive WB detected in: HepG2 whole cell lysate(20µg), U251 whole cell lysate(20µg), MCF7 whole cell lysate(20µg), SY5Y whole cell lysate(20µg), Mouse Liver tissue lysate(20µg), Mouse Brain tissue lysate(20µg) All lanes: YIPF3 antibody at 1:1000 Secondary Goat polyclonal to rabbit IgG at 1/20000 Predicted band size: 39 kDa Observed band size: 39 kDa Exposure time: 120s