

PHOSPHO1 Antibody

PACO52538

Description

This PHOSPHO1 Antibody is supplied as a kit for advanced applications. The kit includes Bradford Reagent to quantify total protein concentration for accurate sample normalization (Optional).

Product Information

SKU:	PACO52538
Contents:	50µg Bradford Reagent: 1 vial (2ml)
Category:	-
Synonyms:	PHOP1_HUMAN antibody, Phosphatase orphan 1 antibody, Phospho 1 antibody, phospho1 antibody, Phosphoethanolamine/phosphocholine phosphatase antibody
Clone:	Polyclonal
Applications:	ELISA IHC
Conjugation:	Non-conjugated
Reactivity:	Human

Antibody Data

Isotype:	IgG
Uniprot:	Q8TCT1
Host Species:	Rabbit
Purification:	>95%, Protein G purified
Immunogen:	Recombinant Human Phosphoethanolamine/phosphocholine phosphatase protein (1-267AA)
Immunogen Species:	Homo sapiens (Human)
Buffer:	Preservative: 0.03% Proclin 300 Constituents: 50% Glycerol, 0.01M PBS, pH 7.4
Form:	Liquid

Preparation & Storage

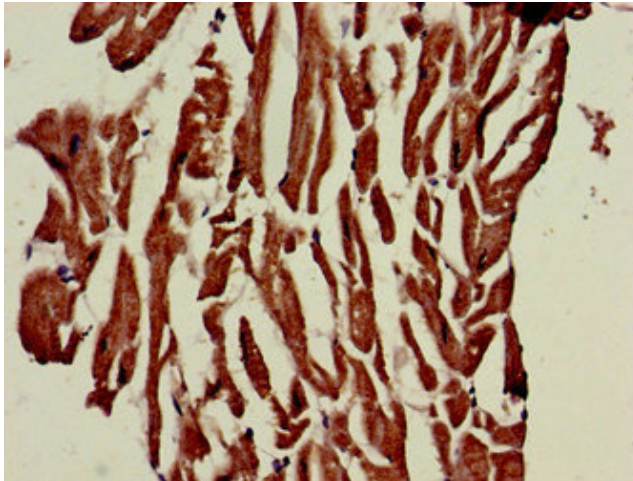
Storage: Upon receipt, store at -20°C or -80°C. Avoid repeated freeze. Store Bradford Reagent at Room Temperature for 1 Year.

Recommended Dilutions:	Application	Recommended Dilution
	IHC	1:20-1:200

Protein Quantification (Optional): To quantify total protein levels, use the Bradford Reagent included in this kit. Visit <https://www.assaygenie.com/bradford-protein-assay-protocol/> to view the full protocol

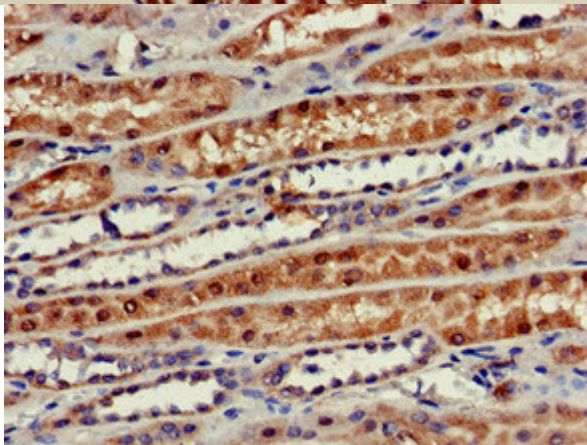
Validation Data

Image



Description

Immunohistochemistry of paraffin-embedded human heart tissue using PACO52538 at dilution of 1:100



Immunohistochemistry of paraffin-embedded human kidney tissue using PACO52538 at dilution of 1:100