

RBFA Antibody

PACO52586

Description

This RBFA Antibody is supplied as a kit for advanced applications. The kit includes Bradford Reagent to quantify total protein concentration for accurate sample normalization (Optional).

Product Information

SKU:	PACO52586
Contents:	50µg Bradford Reagent: 1 vial (2ml)
Category:	-
Synonyms:	Chromosome 18 open reading frame 22 antibody, HsT169 antibody, Hypothetical protein LOC79863 antibody, mitochondrial antibody, Putative ribosome binding factor A, mitochondrial precursor antibody, Putative ribosome-binding factor A antibody, rbfA antibody, RBFA_HUMAN antibody
Clone:	Polyclonal
Applications:	ELISA WB IHC
Conjugation:	Non-conjugated
Reactivity:	Human, Mouse, Rat

Antibody Data

Isotype:	IgG
Uniprot:	Q8N0V3
Host Species:	Rabbit
Purification:	>95%, Protein G purified
Immunogen:	Recombinant Human Putative ribosome-binding factor A, mitochondrial protein (201-343AA)
Immunogen Species:	Homo sapiens (Human)
Buffer:	Preservative: 0.03% Proclin 300 Constituents: 50% Glycerol, 0.01M PBS, pH 7.4
Form:	Liquid

Manufacturers Statement: This final kit system is assembled and quality-released by Assay Genie Limited.

Preparation & Storage

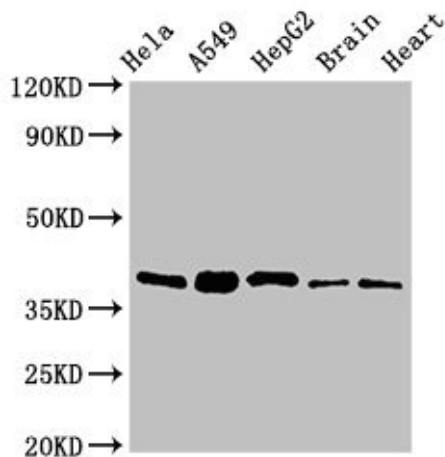
Storage: Upon receipt, store at -20°C or -80°C. Avoid repeated freeze. Store Bradford Reagent at Room Temperature for 1 Year.

Recommended Dilutions:	Application	Recommended Dilution
	WB	1:500-1:5000
IHC	1:20-1:200	

Protein Quantification (Optional): To quantify total protein levels, use the Bradford Reagent included in this kit. Visit <https://www.assaygenie.com/bradford-protein-assay-protocol/> to view the full protocol

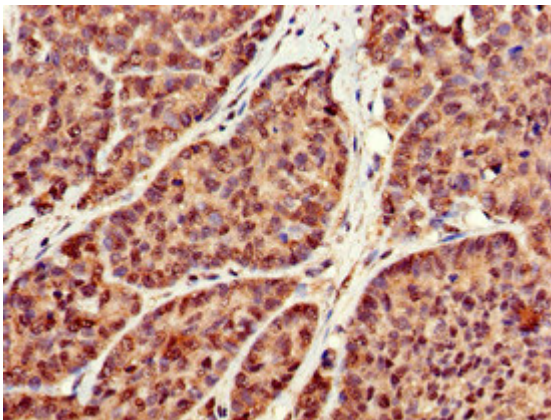
Validation Data

Image

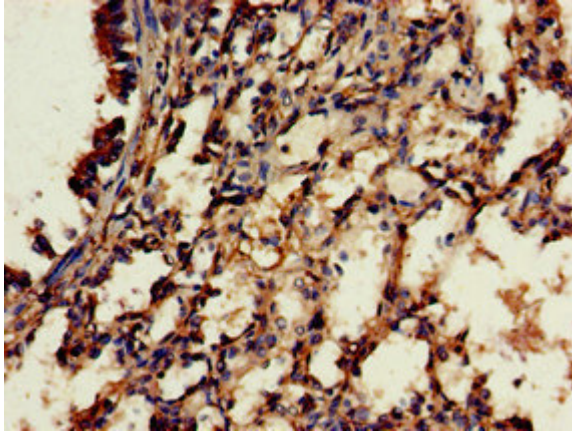


Description

Western Blot Positive WB detected in: HeLa whole cell lysate, A549 whole cell lysate, HepG2 whole cell lysate, Mouse brain tissue, Rat heart tissue All lanes: RBFA antibody at 2µg/ml Secondary Goat polyclonal to rabbit IgG at 1/50000 dilution Predicted band size: 39, 28 kDa Observed band size: 39 kDa



Immunohistochemistry of paraffin-embedded human ovarian cancer using PACO52586 at dilution of 1:100



Immunohistochemistry of paraffin-embedded human lung tissue using PACO52586 at dilution of 1:100