

GUCD1 Antibody

PACO52606

Description

This GUCD1 Antibody is supplied as a kit for advanced applications. The kit includes Bradford Reagent to quantify total protein concentration for accurate sample normalization (Optional).

Product Information

SKU:	PACO52606
Contents:	50µg Bradford Reagent: 1 vial (2ml)
Category:	-
Synonyms:	C22orf13 antibody, CG13760 gene product [Drosophila melanogaster] homolog antibody, Chromosome 22 open reading frame 13 antibody, CV013_HUMAN antibody, Guanylyl cyclase domain containing 1 antibody, Guanylyl cyclase domain containing protein 1 antibody, LLN4 antibody, MGC1842 antibody, OTTHUMP00000198388 antibody, Protein GUCD1 antibody, Protein LLN4 antibody, Uncharacterized protein C22orf13 antibody
Clone:	Polyclonal
Applications:	ELISA WB IHC IF
Conjugation:	Non-conjugated
Reactivity:	Human, Mouse

Antibody Data

Isotype:	IgG
Uniprot:	Q96NT3
Host Species:	Rabbit
Purification:	>95%, Protein G purified
Immunogen:	Recombinant Human Protein GUCD1 protein (1-136AA)
Immunogen Species:	Homo sapiens (Human)
Buffer:	Preservative: 0.03% Proclin 300 Constituents: 50% Glycerol, 0.01M PBS, pH 7.4

Form: Liquid

Preparation & Storage

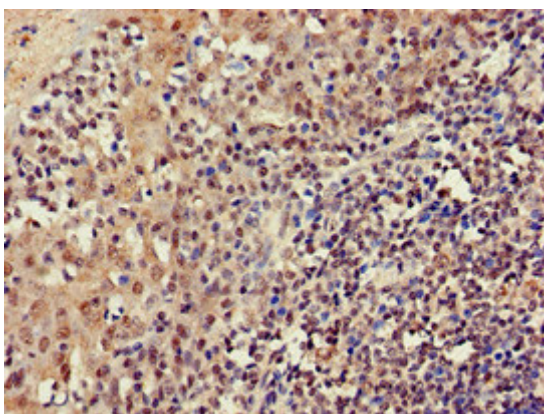
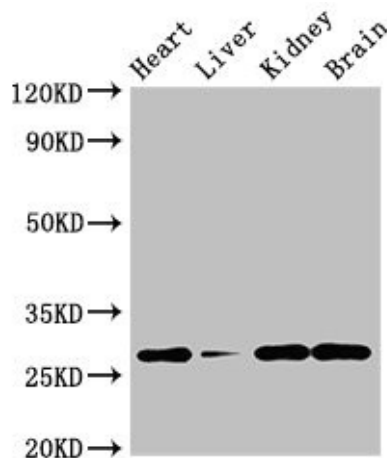
Storage: Upon receipt, store at -20°C or -80°C. Avoid repeated freeze. Store Bradford Reagent at Room Temperature for 1 Year.

Recommended Dilutions:	Application	Recommended Dilution
	WB	1:500-1:5000
	IHC	1:20-1:200
	IF	1:50-1:200

Protein Quantification (Optional): To quantify total protein levels, use the Bradford Reagent included in this kit. Visit <https://www.assaygenie.com/bradford-protein-assay-protocol/> to view the full protocol

Validation Data

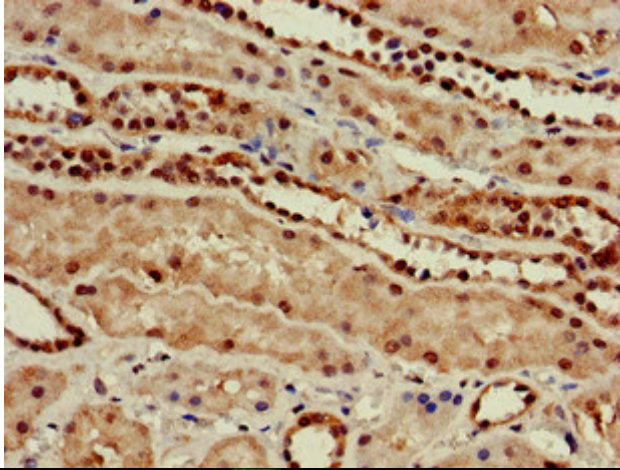
Image



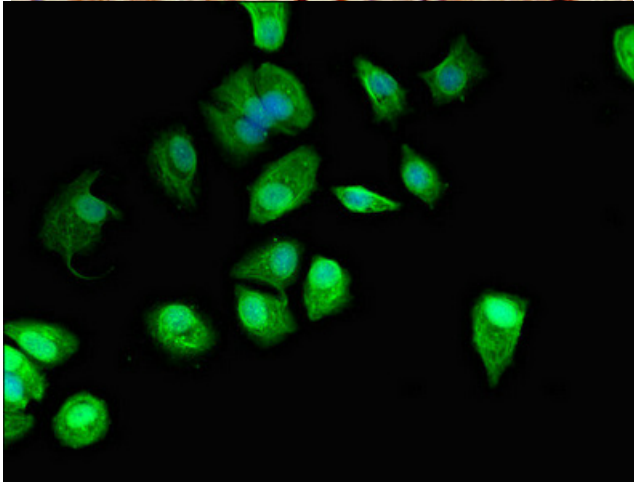
Description

Western Blot Positive WB detected in: Mouse heart tissue, Mouse liver tissue, Mouse kidney tissue, Mouse brain tissue
All lanes: GUCD1 antibody at 4µg/ml
Secondary Goat polyclonal to rabbit IgG at 1/50000 dilution
Predicted band size: 28, 34 kDa
Observed band size: 28 kDa

Immunohistochemistry of paraffin-embedded human tonsil tissue using PACO52606 at dilution of 1:100



Immunohistochemistry of paraffin-embedded human kidney tissue using PACO52606 at dilution of 1:100



Immunofluorescent analysis of MCF-7 cells using PACO52606 at dilution of 1:100 and Alexa Fluor 488-conjugated AffiniPure Goat Anti-Rabbit IgG(H+L)