

SLC6A13 Antibody

PACO52866

Description

This SLC6A13 Antibody is supplied as a kit for advanced applications. The kit includes Bradford Reagent to quantify total protein concentration for accurate sample normalization (Optional).

Product Information

SKU:	PACO52866
Contents:	50µg Bradford Reagent: 1 vial (2ml)
Category:	Polyclonal Antibody
Synonyms:	GABA transport protein antibody, GAT 2 antibody, GAT-2 antibody, GAT2 antibody, S6A13_HUMAN antibody, SLC6A13 antibody, Sodium- and chloride-dependent GABA transporter 2 antibody, Solute carrier family 6 (Neurotransmitter transporter, GABA), member 13 antibody, Solute carrier family 6 member 13 antibody
Clone:	Polyclonal
Applications:	ELISA WB IF
Conjugation:	Non-conjugated
Reactivity:	Human, Mouse, Rat

Antibody Data

Isotype:	IgG
Uniprot:	Q9NSD5
Host Species:	Rabbit
Purification:	Antigen affinity purification
Immunogen:	Recombinant Human Sodium- and chloride-dependent GABA transporter 2 protein
Immunogen Species:	Homo sapiens (Human)
Buffer:	Liquid in PBS containing 50% glycerol, 0.5% BSA and 0.02% sodium azid
Form:	Liquid

Manufacturers Statement: This final kit system is assembled and quality-released by Assay Genie Limited.

Preparation & Storage

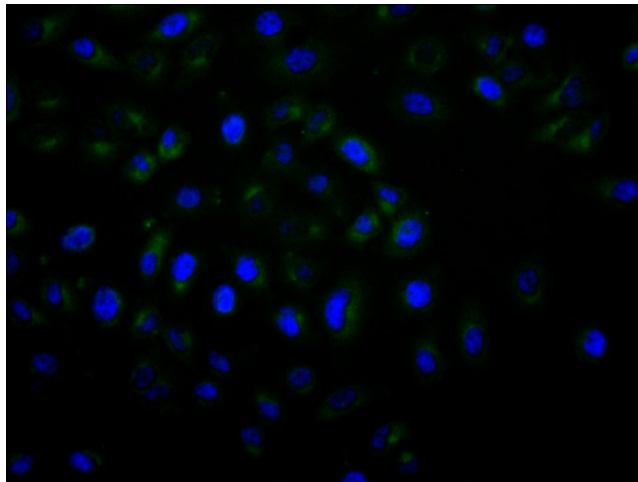
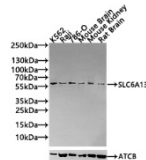
Storage: Upon receipt, store at -20°C or -80°C. Avoid repeated freeze. Store Bradford Reagent at Room Temperature for 1 Year.

Recommended Dilutions:	Application	Recommended Dilution
	WB	1:500-1:5000
	IF	1:20-1:200

Protein Quantification (Optional): To quantify total protein levels, use the Bradford Reagent included in this kit. Visit <https://www.assaygenie.com/bradford-protein-assay-protocol/> to view the full protocol

Validation Data

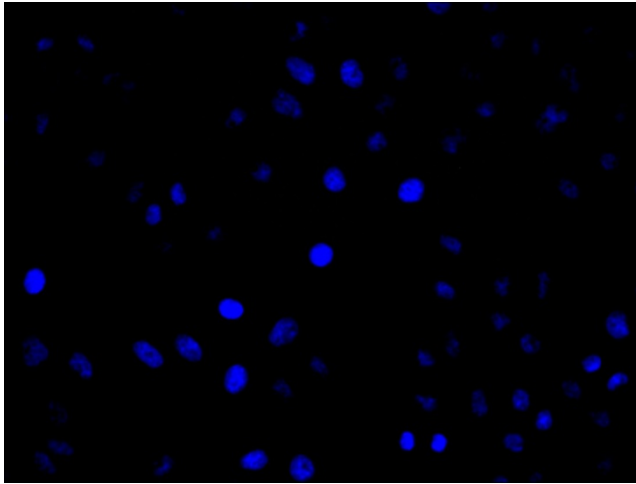
Image



Description

Western Blot Positive WB detected in: K562 whole cell lysate(30µg), Raji whole cell lysate(30µg), 786-O whole cell lysate(30µg), Mouse Brain tissue lysate(20µg), Mouse Kidney tissue lysate(20µg), Rat Brain tissue lysate(20µg) All lanes: SLC6A13 antibody at 1:1000 Secondary Goat polyclonal to rabbit IgG at 1/20000 dilution Predicted band size: 69,58,11 kDa Observed band size: 58 kDa Exposure time: 120s

Immunofluorescence staining of HeLa cell with PACO52866 at 1:30, counterstained with DAPI. The cells were fixed in 4% formaldehyde and blocked in 10% normal Goat Serum. The cells were then incubated with the antibody overnight at 4C. The secondary antibody was Alexa Fluor 488-conjugated AffiniPure Goat Anti-Rabbit IgG(H+L).



Immunofluorescence staining of HeLa cell with 5% goat serum, counter-stained with DAPI. The cells were fixed in 4% formaldehyde and blocked in 10% normal Goat Serum. The cells were then incubated with the antibody overnight at 4C. The secondary antibody was Alexa Fluor 488-conjugated AffiniPure Goat Anti-Rabbit IgG(H+L).