

ZFYVE26 Antibody

PACO53110

Description

This ZFYVE26 Antibody is supplied as a kit for advanced applications. The kit includes Bradford Reagent to quantify total protein concentration for accurate sample normalization (Optional).

Product Information

SKU:	PACO53110
Contents:	50µg Bradford Reagent: 1 vial (2ml)
Category:	-
Synonyms:	DKFZp686F19106 antibody, DKFZp781H1112 antibody, FYVE domain-containing centrosomal protein antibody, FYVE-CENT antibody, KIAA0321 antibody, Spastic paraplegia 15 (complicated autosomal recessive) antibody, Spastizin antibody, SPG15 antibody, ZFY26_HUMAN antibody, ZFYVE 26 antibody, ZFYVE26 antibody, Zinc finger FYVE domain containing 26 antibody, Zinc finger FYVE domain containing protein 26 antibody, Zinc finger FYVE domain-containing protein 26 antibody
Clone:	Polyclonal
Applications:	ELISA IHC IF
Conjugation:	Non-conjugated
Reactivity:	Human

Antibody Data

Isotype:	IgG
Uniprot:	Q68DK2
Host Species:	Rabbit
Purification:	>95%, Protein G purified
Immunogen:	Recombinant Human Zinc finger FYVE domain-containing protein 26 protein (2306-2473AA)
Immunogen Species:	Homo sapiens (Human)

Buffer: Preservative: 0.03% Proclin 300 Constituents: 50% Glycerol, 0.01M PBS, pH 7.4

Form: Liquid

Preparation & Storage

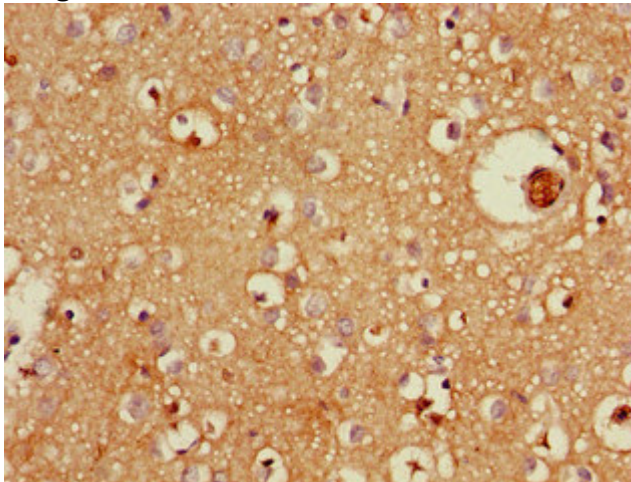
Storage: Upon receipt, store at -20°C or -80°C. Avoid repeated freeze.
Store Bradford Reagent at Room Temperature for 1 Year.

Recommended Dilutions:	Application	Recommended Dilution
	IHC	1:20-1:200
	IF	1:50-1:200

Protein Quantification (Optional): To quantify total protein levels, use the Bradford Reagent included in this kit. Visit <https://www.assaygenie.com/bradford-protein-assay-protocol/> to view the full protocol

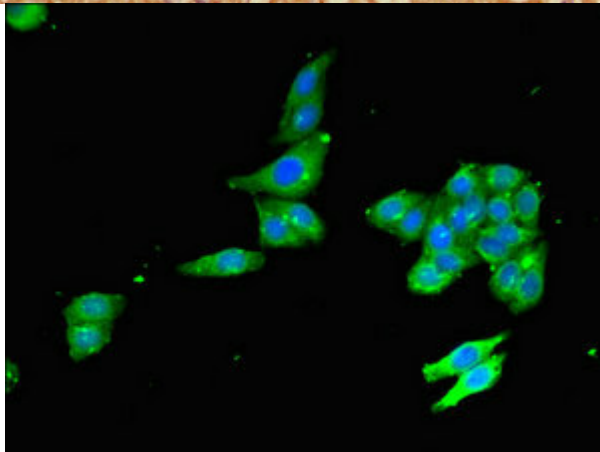
Validation Data

Image



Description

Immunohistochemistry of paraffin-embedded human brain tissue using PACO53110 at dilution of 1:100



Immunofluorescent analysis of HepG2 cells using PACO53110 at dilution of 1:100 and Alexa Fluor 488-conjugated AffiniPure Goat Anti-Rabbit IgG(H+L)