

SDHAF1 Antibody

PACO54102

Description

This SDHAF1 Antibody is supplied as a kit for advanced applications. The kit includes Bradford Reagent to quantify total protein concentration for accurate sample normalization (Optional).

Product Information

SKU:	PACO54102
Contents:	50µg Bradford Reagent: 1 vial (2ml)
Category:	-
Synonyms:	LYR motif containing 8 antibody, LYR motif-containing protein 8 antibody, LYRM8 antibody, mitochondrial antibody, SDH assembly factor 1 antibody, SDHAF1 antibody, SDHF1_HUMAN antibody, Succinate dehydrogenase assembly factor 1 antibody, Succinate dehydrogenase assembly factor 1 mitochondrial antibody, Succinate dehydrogenase complex assembly factor 1 antibody
Clone:	Polyclonal
Applications:	ELISA IHC
Conjugation:	Non-conjugated
Reactivity:	Human

Antibody Data

Isotype:	IgG
Uniprot:	A6NFY7
Host Species:	Rabbit
Purification:	>95%, Protein G purified
Immunogen:	Recombinant Human Succinate dehydrogenase assembly factor 1, mitochondrial protein (78-115AA)
Immunogen Species:	Homo sapiens (Human)
Buffer:	Preservative: 0.03% Proclin 300 Constituents: 50% Glycerol, 0.01M PBS, pH 7.4

Manufacturers Statement: This final kit system is assembled and quality-released by Assay Genie Limited.

Form: Liquid

Preparation & Storage

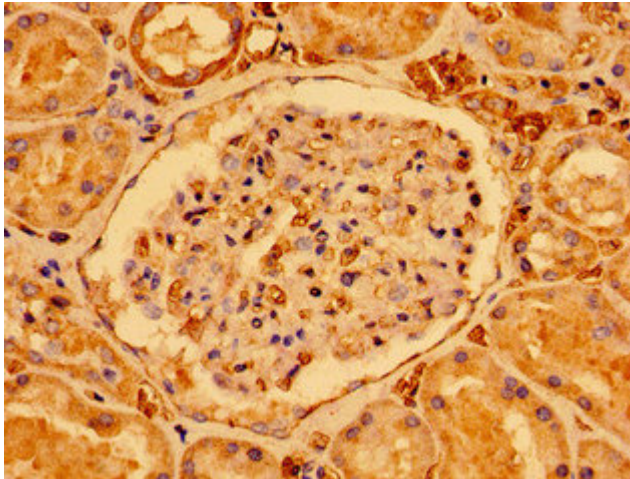
Storage: Upon receipt, store at -20°C or -80°C. Avoid repeated freeze.
Store Bradford Reagent at Room Temperature for 1 Year.

Recommended Dilutions:	Application	Recommended Dilution
	IHC	1:20-1:200

Protein Quantification (Optional): To quantify total protein levels, use the Bradford Reagent included in this kit. Visit <https://www.assaygenie.com/bradford-protein-assay-protocol/> to view the full protocol

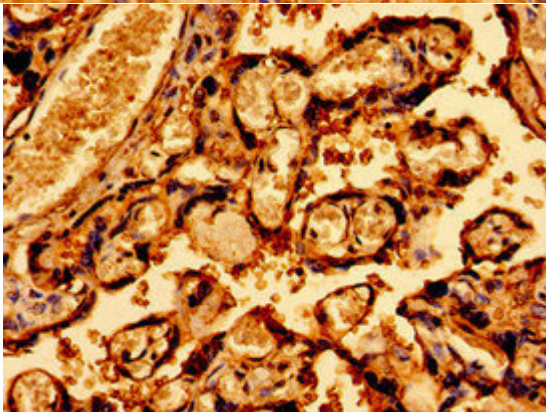
Validation Data

Image



Description

Immunohistochemistry of paraffin-embedded human kidney tissue using PACO54102 at dilution of 1:100



Immunohistochemistry of paraffin-embedded human placenta tissue using PACO54102 at dilution of 1:100