

SHE Antibody

PACO54126

Description

This SHE Antibody is supplied as a kit for advanced applications. The kit includes Bradford Reagent to quantify total protein concentration for accurate sample normalization (Optional).

Product Information

SKU:	PACO54126
Contents:	50µg Bradford Reagent: 1 vial (2ml)
Category:	-
Synonyms:	RP11-350G8.8 antibody, SH2 domain-containing adapter protein E antibody, She antibody, SHE_HUMAN antibody, Src homology 2 domain containing E antibody
Clone:	Polyclonal
Applications:	ELISA WB IHC
Conjugation:	Non-conjugated
Reactivity:	Human, Mouse, Rat

Antibody Data

Isotype:	IgG
Uniprot:	Q5VZ18
Host Species:	Rabbit
Purification:	>95%, Protein G purified
Immunogen:	Recombinant Human SH2 domain-containing adapter protein E protein (2-162AA)
Immunogen Species:	Homo sapiens (Human)
Buffer:	Preservative: 0.03% Proclin 300 Constituents: 50% Glycerol, 0.01M PBS, pH 7.4
Form:	Liquid

Preparation & Storage

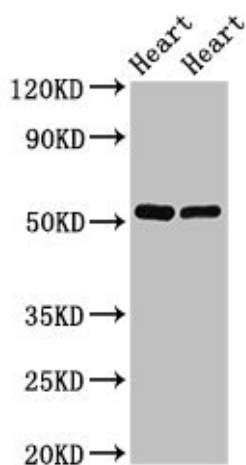
Storage: Upon receipt, store at -20°C or -80°C. Avoid repeated freeze. Store Bradford Reagent at Room Temperature for 1 Year.

Recommended Dilutions:	Application	Recommended Dilution
	WB	1:500-1:5000
IHC	1:20-1:200	

Protein Quantification (Optional): To quantify total protein levels, use the Bradford Reagent included in this kit. Visit <https://www.assaygenie.com/bradford-protein-assay-protocol/> to view the full protocol

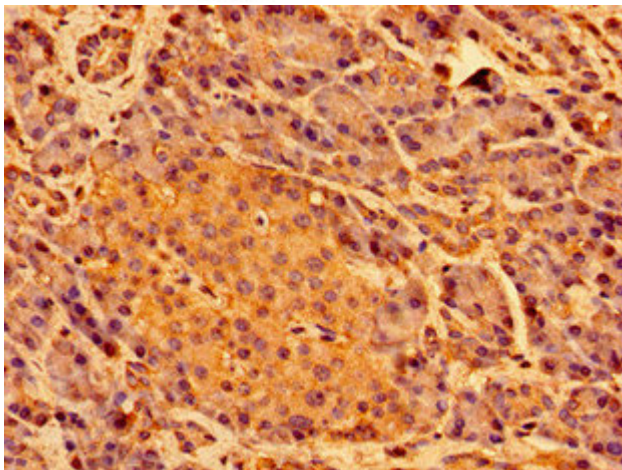
Validation Data

Image



Description

Western Blot Positive WB detected in: Rat heart tissue, Mouse heart tissue All lanes: SHE antibody at 2.5µg/ml Secondary Goat polyclonal to rabbit IgG at 1/50000 dilution Predicted band size: 54 kDa Observed band size: 54 kDa



Immunohistochemistry of paraffin-embedded human pancreatic tissue using PACO54126 at dilution of 1:100