

ECT2 Antibody

PACO56222

Description

This ECT2 Antibody is supplied as a kit for advanced applications. The kit includes Bradford Reagent to quantify total protein concentration for accurate sample normalization (Optional).

Product Information

SKU:	PACO56222
Contents:	50µg Bradford Reagent: 1 vial (2ml)
Category:	-
Synonyms:	ECT2Protein ECT2 antibody, Epithelial cell-transforming sequence 2 oncogene antibody
Clone:	Polyclonal
Applications:	ELISA WB IHC IP
Conjugation:	Non-conjugated
Reactivity:	Human

Antibody Data

Isotype:	IgG
Uniprot:	Q9H8V3
Host Species:	Rabbit
Purification:	>95%, Protein G purified
Immunogen:	Recombinant Human Protein ECT2 protein (283-453AA)
Immunogen Species:	Homo sapiens (Human)
Buffer:	Preservative: 0.03% Proclin 300 Constituents: 50% Glycerol, 0.01M PBS, pH 7.4
Form:	Liquid

Manufacturers Statement: This final kit system is assembled and quality-released by Assay Genie Limited.

Preparation & Storage

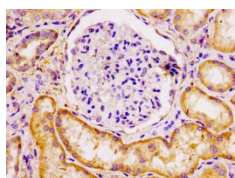
Storage: Upon receipt, store at -20°C or -80°C. Avoid repeated freeze.
Store Bradford Reagent at Room Temperature for 1 Year.

Recommended Dilutions:	Application	Recommended Dilution
	WB	1:500-1:5000
	IHC	1:500-1:1000
	IP	1:200-1:2000

Protein Quantification (Optional): To quantify total protein levels, use the Bradford Reagent included in this kit. Visit <https://www.assaygenie.com/bradford-protein-assay-protocol/> to view the full protocol

Validation Data

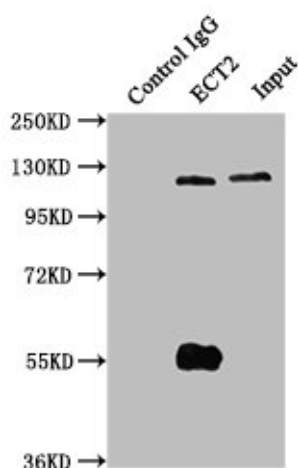
Image

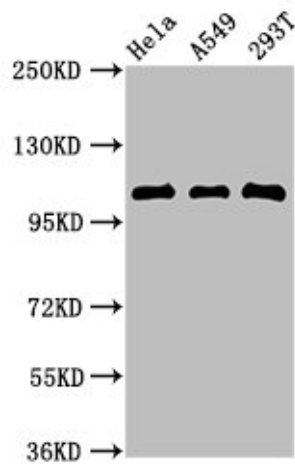


Description

IHC image of PACO56222 diluted at 1:100 and staining in paraffin-embedded human kidney tissue performed on a Leica Bond™ system. After dewaxing and hydration, antigen retrieval was mediated by high pressure in a citrate buffer (pH 6.0). Section was blocked with 10% normal goat serum 30min at RT. Then primary antibody (1% BSA) was incubated at 4°C overnight. The primary is detected by a biotinylated secondary antibody and visualized using an HRP conjugated SP system.

Immunoprecipitating ECT2 in Hela whole cell lysate
Lane 1: Rabbit control IgG instead of PACO56222 in Hela whole cell lysate. For western blotting, a HRP-conjugated Protein G antibody was used as the secondary antibody (1/50000) Lane 2: PACO56222 (6µg) + Hela whole cell lysate (1mg) Lane 3: Hela whole cell lysate (20µg)





Western Blot Positive WB detected in: HeLa whole cell lysate, A549 whole cell lysate, 293T whole cell lysate All lanes: ECT2 antibody at 2.7µg/ml Secondary Goat polyclonal to rabbit IgG at 1/50000 dilution Predicted band size: 104, 100, 109, 101 kDa Observed band size: 104 kDa