

IGSF9 Antibody

PACO58072

Description

This IGSF9 Antibody is supplied as a kit for advanced applications. The kit includes Bradford Reagent to quantify total protein concentration for accurate sample normalization (Optional).

Product Information

| | |
|----------------------|--|
| SKU: | PACO58072 |
| Contents: | 50µg Bradford Reagent: 1 vial (2ml) |
| Category: | - |
| Synonyms: | IGSF9 antibody, IGSF9A antibody, KIAA1355 antibody, NRT1 antibody, Protein turtle homolog A antibody, Immunoglobulin superfamily member 9A antibody, IgSF9A antibody |
| Clone: | Polyclonal |
| Applications: | ELISA IHC |
| Conjugation: | Non-conjugated |
| Reactivity: | Human |

Antibody Data

| | |
|---------------------------|---|
| Isotype: | IgG |
| Uniprot: | Q9P2J2 |
| Host Species: | Rabbit |
| Purification: | >95%, Protein G purified |
| Immunogen: | Recombinant Human Protein turtle homolog A protein (132-298AA) |
| Immunogen Species: | Homo sapiens (Human) |
| Buffer: | Preservative: 0.03% Proclin 300 Constituents: 50% Glycerol, 0.01M PBS, pH 7.4 |
| Form: | Liquid |

Preparation & Storage

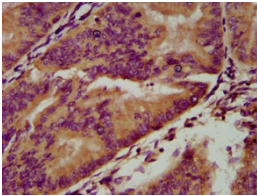
Storage: Upon receipt, store at -20°C or -80°C. Avoid repeated freeze.
Store Bradford Reagent at Room Temperature for 1 Year.

| Recommended Dilutions: | Application | Recommended Dilution |
|-------------------------------|--------------------|-----------------------------|
| | IHC | 1:200-1:500 |

Protein Quantification (Optional): To quantify total protein levels, use the Bradford Reagent included in this kit. Visit <https://www.assaygenie.com/bradford-protein-assay-protocol/> to view the full protocol

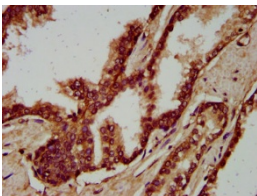
Validation Data

Image



Description

IHC image of PACO58072 diluted at 1:200 and staining in paraffin-embedded human endometrial cancer performed on a Leica Bond™ system. After dewaxing and hydration, antigen retrieval was mediated by high pressure in a citrate buffer (pH 6.0). Section was blocked with 10% normal goat serum 30min at RT. Then primary antibody (1% BSA) was incubated at 4°C overnight. The primary is detected by a biotinylated secondary antibody and visualized using an HRP conjugated SP system.



IHC image of PACO58072 diluted at 1:200 and staining in paraffin-embedded human prostate cancer performed on a Leica Bond™ system. After dewaxing and hydration, antigen retrieval was mediated by high pressure in a citrate buffer (pH 6.0). Section was blocked with 10% normal goat serum 30min at RT. Then primary antibody (1% BSA) was incubated at 4°C overnight. The primary is detected by a biotinylated secondary antibody and visualized using an HRP conjugated SP system.