

REM1 Antibody

PACO58865

Description

This REM1 Antibody is supplied as a kit for advanced applications. The kit includes Bradford Reagent to quantify total protein concentration for accurate sample normalization (Optional).

Product Information

SKU:	PACO58865
Contents:	50µg Bradford Reagent: 1 vial (2ml)
Category:	-
Synonyms:	E030011C07Rik antibody, GD:REM antibody, GES antibody, GTP binding protein REM antibody, GTP binding protein REM 1 antibody, GTP binding protein REM1 antibody, GTP-binding protein REM 1 antibody, GTPase GES antibody, GTPase regulating endothelial cell sprouting antibody, GTPase-regulating endothelial cell sprouting antibody, MGC114556 antibody, MGC48669 antibody, OTTMUSP00000016855 antibody, Rad and Gem like GTP binding protein 1 antibody, Rad and Gem-like GTP-binding protein 1 antibody, RAS (RAD and GEM) like GTP binding antibody, RAS like GTP binding antibody, RAS like GTP binding protein RE... Read more
Clone:	Polyclonal
Applications:	ELISA IF
Conjugation:	Non-conjugated
Reactivity:	Human

Antibody Data

Isotype:	IgG
Uniprot:	O75628
Host Species:	Rabbit
Purification:	>95%, Protein G purified
Immunogen:	Recombinant Human GTP-binding protein REM 1 protein (2-153AA)
Immunogen Species:	Homo sapiens (Human)

Manufacturers Statement: This final kit system is assembled and quality-released by Assay Genie Limited.

Buffer: Preservative: 0.03% Proclin 300 Constituents: 50% Glycerol, 0.01M PBS, pH 7.4

Form: Liquid

Preparation & Storage

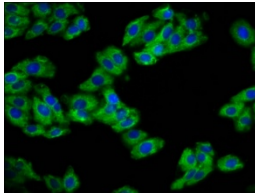
Storage: Upon receipt, store at -20°C or -80°C. Avoid repeated freeze.
Store Bradford Reagent at Room Temperature for 1 Year.

Recommended Dilutions:	Application	Recommended Dilution
	IF	1:50-1:200

Protein Quantification (Optional): To quantify total protein levels, use the Bradford Reagent included in this kit. Visit <https://www.assaygenie.com/bradford-protein-assay-protocol/> to view the full protocol

Validation Data

Image



Description

Immunofluorescence staining of HepG2 cells with PACO58865 at 1:133, counter-stained with DAPI. The cells were fixed in 4% formaldehyde, permeabilized using 0.2% Triton X-100 and blocked in 10% normal Goat Serum. The cells were then incubated with the antibody overnight at 4°C. The secondary antibody was Alexa Fluor 488-conjugated AffiniPure Goat Anti-Rabbit IgG(H+L).