

## LRIG2 Antibody

PACO59780

### Description

---

This LRIG2 Antibody is supplied as a kit for advanced applications. The kit includes Bradford Reagent to quantify total protein concentration for accurate sample normalization (Optional).

### Product Information

---

|                      |   |
|----------------------|---|
| <b>SKU:</b>          | PACO59780   |
| <b>Contents:</b>     | 50µg<br>Bradford Reagent: 1 vial (2ml)  |
| <b>Category:</b>     | -   |
| <b>Synonyms:</b>     | KIAA0806 antibody, Leucine rich repeats and immunoglobulin like domains 2 antibody, Leucine-rich repeats and immunoglobulin-like domains protein 2 antibody, LIG-2 antibody, LIG2 antibody, LRIG2 antibody, LRIG2_HUMAN antibody, UFS2 antibody |
| <b>Clone:</b>        | Polyclonal  |
| <b>Applications:</b> | <b>ELISA</b> <b>WB</b> <b>IF</b>  |
| <b>Conjugation:</b>  | Non-conjugated  |
| <b>Reactivity:</b>   | Human   |

### Antibody Data

---

|                           |  |
|---------------------------|--|
| <b>Isotype:</b>           | IgG  |
| <b>Uniprot:</b>           | O94898   |
| <b>Host Species:</b>      | Rabbit   |
| <b>Purification:</b>      | >95%, Protein G purified   |
| <b>Immunogen:</b>         | Recombinant Human Leucine-rich repeats and immunoglobulin-like domains protein 2 protein (833-932AA) |
| <b>Immunogen Species:</b> | Homo sapiens (Human)   |
| <b>Buffer:</b>            | Preservative: 0.03% Proclin 300 Constituents: 50% Glycerol, 0.01M PBS, pH 7.4                        |
| <b>Form:</b>              | Liquid   |

**Manufacturers Statement:** This final kit system is assembled and quality-released by Assay Genie Limited.

## Preparation & Storage

---

**Storage:** Upon receipt, store at -20°C or -80°C. Avoid repeated freeze.  
Store Bradford Reagent at Room Temperature for 1 Year.

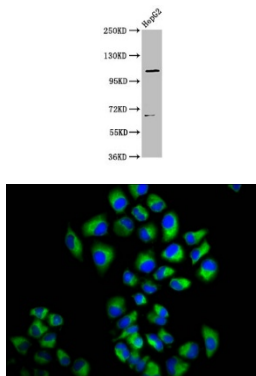
| Recommended Dilutions: | Application | Recommended Dilution |
|------------------------|-------------|----------------------|
|                        | WB          | 1:500-1:5000         |
|                        | IF          | 1:50-1:200           |

**Protein Quantification (Optional):** To quantify total protein levels, use the Bradford Reagent included in this kit. Visit <https://www.assaygenie.com/bradford-protein-assay-protocol/> to view the full protocol

## Validation Data

---

### Image



### Description

Western Blot Positive WB detected in: HepG2 whole cell lysate All lanes: LRIG2 antibody at 3.5µg/ml Secondary Goat polyclonal to rabbit IgG at 1/50000 dilution Predicted band size: 119 kDa Observed band size: 119 kDa

Immunofluorescence staining of Hela cells with PACO59780 at 1:166, counter-stained with DAPI. The cells were fixed in 4% formaldehyde, permeabilized using 0.2% Triton X-100 and blocked in 10% normal Goat Serum. The cells were then incubated with the antibody overnight at 4°C. The secondary antibody was Alexa Fluor 488-conjugated AffiniPure Goat Anti-Rabbit IgG(H+L).