

DACT1 Antibody

PACO60360

Description

This DACT1 Antibody is supplied as a kit for advanced applications. The kit includes Bradford Reagent to quantify total protein concentration for accurate sample normalization (Optional).

Product Information

SKU:	PACO60360
Contents:	50µg Bradford Reagent: 1 vial (2ml)
Category:	-
Synonyms:	Dact antibody, dact1 antibody, DACT1_HUMAN antibody, Dapper antagonist of beta catenin homolog 1 antibody, Dapper antagonist of catenin 1 antibody, Dapper antibody, Dapper homolog 1 antibody, DAPPER1 antibody, Dpr antibody, Dpr1 antibody, Frd antibody, Frodo antibody, hDPR1 antibody, Hepatocellular carcinoma novel gene 3 protein antibody, Heptacellular carcinoma novel gene 3 antibody, HNG3 antibody, MTNG3 antibody, Thyex3 antibody
Clone:	Polyclonal
Applications:	ELISA IHC IF
Conjugation:	Non-conjugated
Reactivity:	Human

Antibody Data

Isotype:	IgG
Uniprot:	Q9NYF0
Host Species:	Rabbit
Purification:	>95%, Protein G purified
Immunogen:	Recombinant Human Dapper homolog 1 protein (410-525AA)
Immunogen Species:	Homo sapiens (Human)
Buffer:	Preservative: 0.03% Proclin 300 Constituents: 50% Glycerol, 0.01M PBS, pH 7.4

Manufacturers Statement: This final kit system is assembled and quality-released by Assay Genie Limited.

Form: Liquid

Preparation & Storage

Storage: Upon receipt, store at -20°C or -80°C. Avoid repeated freeze.

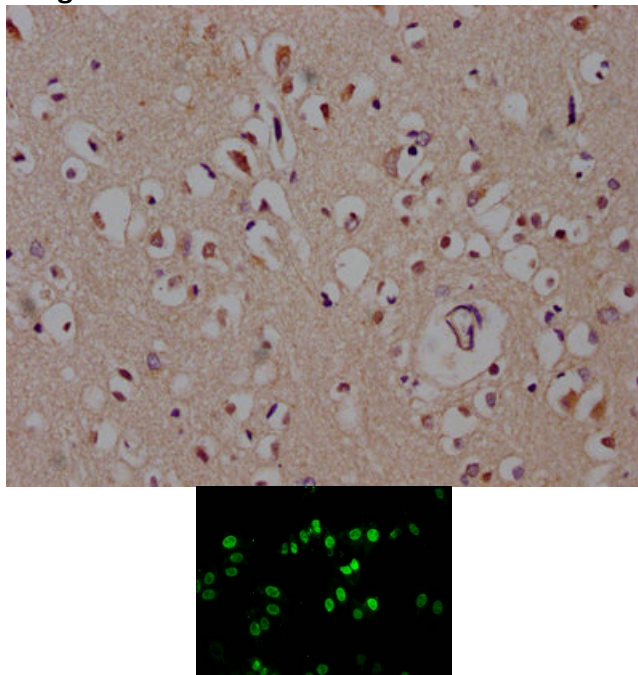
Store Bradford Reagent at Room Temperature for 1 Year.

Recommended Dilutions:	Application	Recommended Dilution
	IHC	1:500-1:1000
	IF	1:50-1:200

Protein Quantification (Optional): To quantify total protein levels, use the Bradford Reagent included in this kit. Visit <https://www.assaygenie.com/bradford-protein-assay-protocol/> to view the full protocol

Validation Data

Image



Description

IHC image of PACO60360 diluted at 1:600 and staining in paraffin-embedded human brain tissue performed on a Leica Bond™ system. After dewaxing and hydration, antigen retrieval was mediated by high pressure in a citrate buffer (pH 6.0). Section was blocked with 10% normal goat serum 30min at RT. Then primary antibody (1% BSA) was incubated at 4°C overnight. The primary is detected by a biotinylated secondary antibody and visualized using an HRP conjugated SP system.

Immunofluorescence staining of HepG2 cells with PACO60360 at 1:100, counter-stained with DAPI. The cells were fixed in 4% formaldehyde, permeabilized tissue using 0.2% Triton X-100 and blocked in 10% normal Goat Serum. The cells were then incubated with the antibody overnight at 4°C. The secondary antibody was Alexa Fluor 488-conjugated AffiniPure Goat Anti-Rabbit IgG(H+L).