

RAPGEF2 Antibody

PACO60460

Description

This RAPGEF2 Antibody is supplied as a kit for advanced applications. The kit includes Bradford Reagent to quantify total protein concentration for accurate sample normalization (Optional).

Product Information

SKU:	PACO60460
Contents:	50µg Bradford Reagent: 1 vial (2ml)
Category:	-
Synonyms:	CNrasGEF antibody, Cyclic nucleotide ras GEF antibody, KIAA0313 antibody, Neural RAP guanine nucleotide exchange protein antibody, nRap GEP antibody, NRAPGEP antibody, PDZ domain containing guanine nucleotide exchange factor 1 antibody, PDZ domain-containing guanine nucleotide exchange factor 1 antibody, PDZ GEF1 antibody, PDZ-GEF1 antibody, PDZGEF1 antibody, RA GEF antibody, RA-GEF-1 antibody, Rap guanine nucleotide exchange factor 2 antibody, Rapgef2 antibody, Ras/Rap1-associating GEF-1 antibody, RPGF2_HUMAN antibody
Clone:	Polyclonal
Applications:	ELISA IF
Conjugation:	Non-conjugated
Reactivity:	Human

Antibody Data

Isotype:	IgG
Uniprot:	Q9Y4G8
Host Species:	Rabbit
Purification:	>95%, Protein G purified
Immunogen:	Recombinant Human Rap guanine nucleotide exchange factor 2 protein (1393-1498AA)
Immunogen Species:	Homo sapiens (Human)

Manufacturers Statement: This final kit system is assembled and quality-released by Assay Genie Limited.

Buffer: Preservative: 0.03% Proclin 300 Constituents: 50% Glycerol, 0.01M PBS, pH 7.4

Form: Liquid

Preparation & Storage

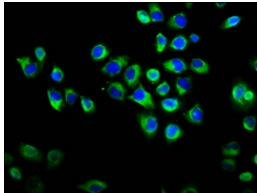
Storage: Upon receipt, store at -20°C or -80°C. Avoid repeated freeze.
Store Bradford Reagent at Room Temperature for 1 Year.

Recommended Dilutions:	Application	Recommended Dilution
	IF	1:50-1:200

Protein Quantification (Optional): To quantify total protein levels, use the Bradford Reagent included in this kit. Visit <https://www.assaygenie.com/bradford-protein-assay-protocol/> to view the full protocol

Validation Data

Image



Description

Immunofluorescence staining of HeLa cells with PACO60460 at 1:133, counter-stained with DAPI. The cells were fixed in 4% formaldehyde, permeabilized using 0.2% Triton X-100 and blocked in 10% normal Goat Serum. The cells were then incubated with the antibody overnight at 4°C. The secondary antibody was Alexa Fluor 488-conjugated AffiniPure Goat Anti-Rabbit IgG(H+L).