

KRT76 Antibody

PACO60749

Description

This KRT76 Antibody is supplied as a kit for advanced applications. The kit includes Bradford Reagent to quantify total protein concentration for accurate sample normalization (Optional).

Product Information

SKU:	PACO60749
Contents:	50µg Bradford Reagent: 1 vial (2ml)
Category:	Polyclonal Antibody
Synonyms:	CK 2P antibody, CK-2P antibody, CK2P antibody, Cytokeratin 2P antibody, Cytokeratin-2P antibody, Cytokeratin2 antibody, Cytokeratin2P antibody, HUMCYT 2A antibody, HUMCYT2A antibody, K22O_HUMAN antibody, K2P antibody, K76 antibody, KB9 antibody, Keratin 2p antibody, Keratin 76 antibody, Keratin 76, type II antibody, Keratin antibody, Keratin type II cytoskeletal 2 oral antibody, Keratin-76 antibody, Keratin2p antibody, Keratin76 antibody, KRT 2B antibody, KRT 2P antibody, KRT 76 antibody, KRT2B antibody, KRT2P antibody, KRT76 antibody, type II cytoskeletal 2 oral antibody, Type-II keratin Kb9 ...Read more
Clone:	Polyclonal
Applications:	ELISA IHC IF
Conjugation:	Non-conjugated
Reactivity:	Human

Antibody Data

Isotype:	IgG
Uniprot:	Q01546
Host Species:	Rabbit
Purification:	>95%, Protein G purified
Immunogen:	Recombinant Human Keratin, type II cytoskeletal 2 oral protein (173-283AA)
Immunogen Species:	Homo sapiens (Human)

Manufacturers Statement: This final kit system is assembled and quality-released by Assay Genie Limited.

Buffer: Preservative: 0.03% Proclin 300 Constituents: 50% Glycerol, 0.01M PBS, pH 7.4

Form: Liquid

Preparation & Storage

Storage: Upon receipt, store at -20°C or -80°C. Avoid repeated freeze.

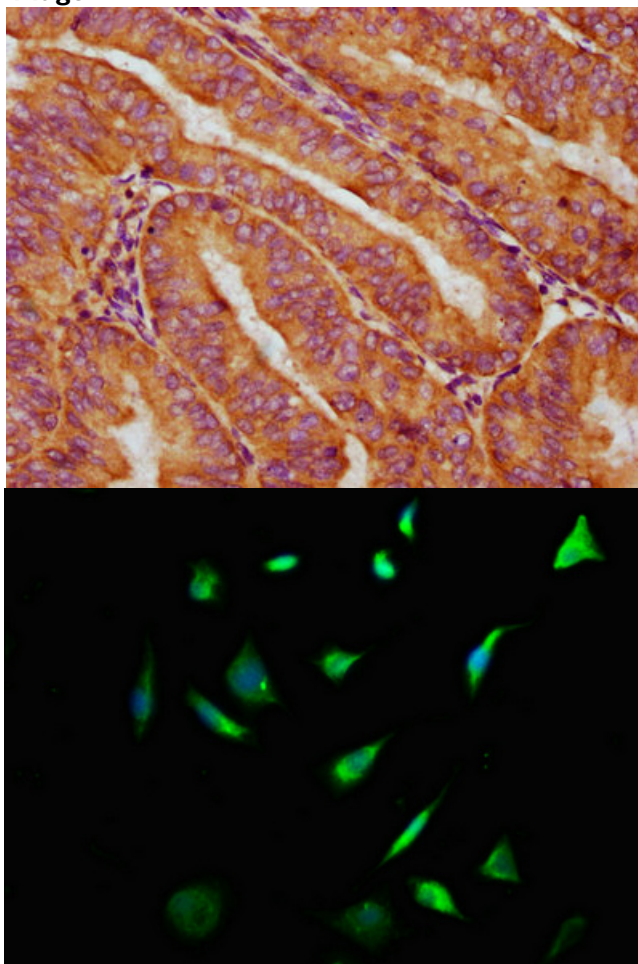
Store Bradford Reagent at Room Temperature for 1 Year.

Recommended Dilutions:	Application	Recommended Dilution
	IHC	1:200-1:500
	IF	1:50-1:200

Protein Quantification (Optional): To quantify total protein levels, use the Bradford Reagent included in this kit. Visit <https://www.assaygenie.com/bradford-protein-assay-protocol/> to view the full protocol

Validation Data

Image



Description

IHC image of PACO60749 diluted at 1:400 and staining in paraffin-embedded human endometrial cancer performed on a Leica Bond™ system. After dewaxing and hydration, antigen retrieval was mediated by high pressure in a citrate buffer (pH 6.0). Section was blocked with 10% normal goat serum 30min at RT. Then primary antibody (1% BSA) was incubated at 4°C overnight. The primary is detected by a biotinylated secondary antibody and visualized using an HRP conjugated SP system.

Immunofluorescence staining of SH-SY5Y cells with PACO60749 at 1:133, counter-stained with DAPI. The cells were fixed in 4% formaldehyde, permeabilized using 0.2% Triton X-100 and blocked in 10% normal Goat Serum. The cells were then incubated with the antibody overnight at 4°C. The secondary antibody was Alexa Fluor 488-conjugated AffiniPure Goat Anti-Rabbit IgG(H+L).