

CABIN1 Antibody

PACO60901

Description

This CABIN1 Antibody is supplied as a kit for advanced applications. The kit includes Bradford Reagent to quantify total protein concentration for accurate sample normalization (Optional).

Product Information

SKU:	PACO60901
Contents:	50µg Bradford Reagent: 1 vial (2ml)
Category:	-
Synonyms:	A330070M20Rik antibody, Cabin 1 antibody, CABIN_HUMAN antibody, Cabin1 antibody, CAIN antibody, Calcineurin binding protein cabin 1 antibody, Calcineurin inhibitor antibody, Calcineurin-binding protein cabin-1 antibody, KIAA0330 antibody, PPP3IN antibody
Clone:	Polyclonal
Applications:	ELISA WB IHC
Conjugation:	Non-conjugated
Reactivity:	Human, Rat

Antibody Data

Isotype:	IgG
Uniprot:	Q9Y6J0
Host Species:	Rabbit
Purification:	>95%, Protein G purified
Immunogen:	Recombinant Human Calcineurin-binding protein cabin-1 protein (1978-2123AA)
Immunogen Species:	Homo sapiens (Human)
Buffer:	Preservative: 0.03% Proclin 300 Constituents: 50% Glycerol, 0.01M PBS, pH 7.4
Form:	Liquid

Manufacturers Statement: This final kit system is assembled and quality-released by Assay Genie Limited.

Preparation & Storage

Storage: Upon receipt, store at -20°C or -80°C. Avoid repeated freeze.

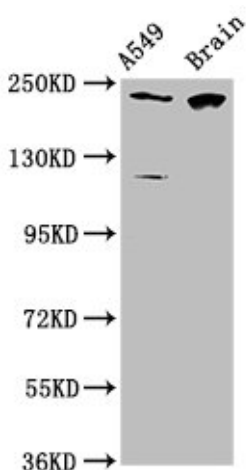
Store Bradford Reagent at Room Temperature for 1 Year.

Recommended Dilutions:	Application	Recommended Dilution
	WB	1:500-1:5000
	IHC	1:200-1:500

Protein Quantification (Optional): To quantify total protein levels, use the Bradford Reagent included in this kit. Visit <https://www.assaygenie.com/bradford-protein-assay-protocol/> to view the full protocol

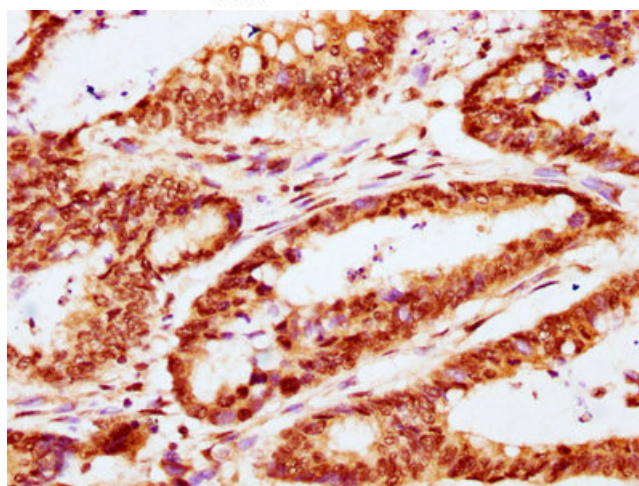
Validation Data

Image

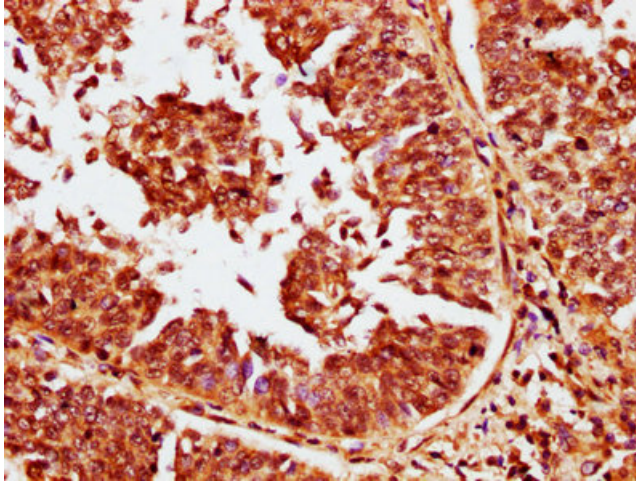


Description

Western Blot Positive WB detected in: A549 whole cell lysate, Rat brain tissue
All lanes: CABIN1 antibody at 3.1µg/ml
Secondary Goat polyclonal to rabbit IgG at 1/50000 dilution
Predicted band size: 247, 238 kDa
Observed band size: 247 kDa



IHC image of PACO60901 diluted at 1:400 and staining in paraffin-embedded human colon cancer performed on a Leica Bond™ system. After dewaxing and hydration, antigen retrieval was mediated by high pressure in a citrate buffer (pH 6.0). Section was blocked with 10% normal goat serum 30min at RT. Then primary antibody (1% BSA) was incubated at 4°C overnight. The primary is detected by a biotinylated secondary antibody and visualized using an HRP conjugated SP system.



IHC image of PACO60901 diluted at 1:400 and staining in paraffin-embedded human cervical cancer performed on a Leica Bond™ system. After dewaxing and hydration, antigen retrieval was mediated by high pressure in a citrate buffer (pH 6.0). Section was blocked with 10% normal goat serum 30min at RT. Then primary antibody (1% BSA) was incubated at 4°C overnight. The primary is detected by a biotinylated secondary antibody and visualized using an HRP conjugated SP system.