

BHLHA15 Antibody

PACO61033

Description

This BHLHA15 Antibody is supplied as a kit for advanced applications. The kit includes Bradford Reagent to quantify total protein concentration for accurate sample normalization (Optional).

Product Information

SKU:	PACO61033
Contents:	50µg Bradford Reagent: 1 vial (2ml)
Category:	-
Synonyms:	Basic helix loop helix domain containing class B 8 antibody, Basic helix loop helix family member a15 antibody, BHA15_HUMAN antibody, Bhlha15 antibody, bHLHB8 antibody, Class A basic helix-loop-helix protein 15 antibody, Class B basic helix-loop-helix protein 8 antibody, Class II bHLH protein MIST1 antibody, intestine and stomach expression 1 antibody, MIST 1 antibody, MIST-1 antibody, MIST1 antibody, Muscle antibody, Muscle intestine and stomach expression 1 antibody, protein MIST1 antibody
Clone:	Polyclonal
Applications:	ELISA IHC
Conjugation:	Non-conjugated
Reactivity:	Human

Antibody Data

Isotype:	IgG
Uniprot:	Q7RTS1
Host Species:	Rabbit
Purification:	>95%, Protein G purified
Immunogen:	Recombinant Human Class A basic helix-loop-helix protein 15 protein (2-72AA)
Immunogen Species:	Homo sapiens (Human)

Buffer: Preservative: 0.03% Proclin 300 Constituents: 50% Glycerol, 0.01M PBS, pH 7.4

Form: Liquid

Preparation & Storage

Storage: Upon receipt, store at -20°C or -80°C. Avoid repeated freeze.

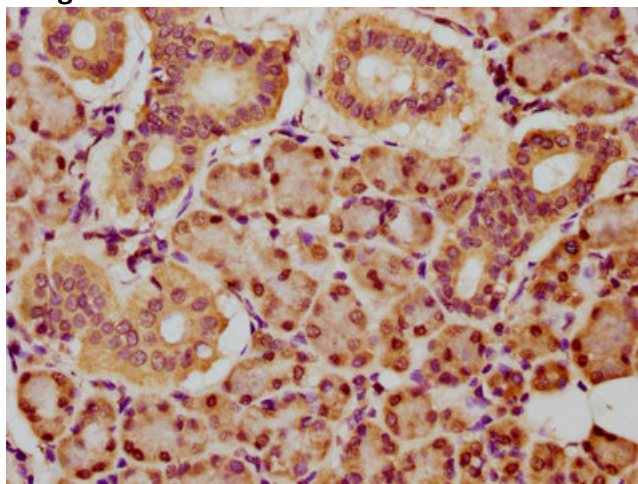
Store Bradford Reagent at Room Temperature for 1 Year.

Recommended Dilutions:	Application	Recommended Dilution
	IHC	1:20-1:200

Protein Quantification (Optional): To quantify total protein levels, use the Bradford Reagent included in this kit. Visit <https://www.assaygenie.com/bradford-protein-assay-protocol/> to view the full protocol

Validation Data

Image



Description

IHC image of PACO61033 diluted at 1:150 and staining in paraffin-embedded human pancreatic tissue performed on a Leica BondTM system. After dewaxing and hydration, antigen retrieval was mediated by high pressure in a citrate buffer (pH 6.0). Section was blocked with 10% normal goat serum 30min at RT. Then primary antibody (1% BSA) was incubated at 4°C overnight. The primary is detected by a biotinylated secondary antibody and visualized using an HRP conjugated SP system.