

GRHL1 Antibody

PACO61726

Description

This GRHL1 Antibody is supplied as a kit for advanced applications. The kit includes Bradford Reagent to quantify total protein concentration for accurate sample normalization (Optional).

Product Information

SKU:	PACO61726
Contents:	50µl Bradford Reagent: 1 vial (2ml)
Category:	-
Synonyms:	Grainyhead-like protein 1 homolog antibody, grhl1 antibody, GRHL1_HUMAN antibody, LBP32 antibody, Mammalian grainyhead antibody, MGR antibody, NH32 antibody, TFCP2L2 antibody, Transcription factor CP2-like 2 antibody, Transcription factor LBP-32 antibody
Clone:	Polyclonal
Applications:	ELISA WB IHC
Conjugation:	Non-conjugated
Reactivity:	Human

Antibody Data

Isotype:	IgG
Uniprot:	Q9NZI5
Host Species:	Rabbit
Purification:	>95%, Protein G purified
Immunogen:	Recombinant Human Grainyhead-like protein 1 homologprotein (1-95AA)
Immunogen Species:	Homo sapiens (Human)
Buffer:	Preservative: 0.03% Proclin 300 Constituents: 50% Glycerol, 0.01M PBS, pH 7.4
Form:	Liquid

Preparation & Storage

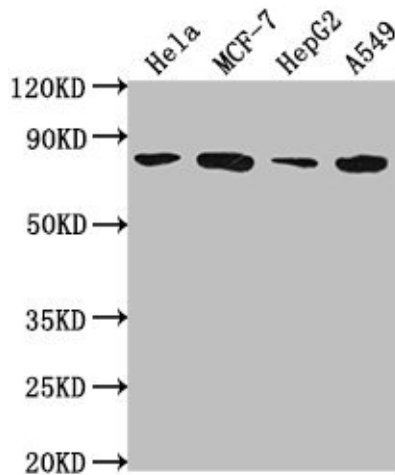
Storage: Upon receipt, store at -20°C or -80°C. Avoid repeated freeze. Store Bradford Reagent at Room Temperature for 1 Year.

Recommended Dilutions:	Application	Recommended Dilution
	WB	1:500-1:5000
	IHC	1:200-1:500

Protein Quantification (Optional): To quantify total protein levels, use the Bradford Reagent included in this kit. Visit <https://www.assaygenie.com/bradford-protein-assay-protocol/> to view the full protocol

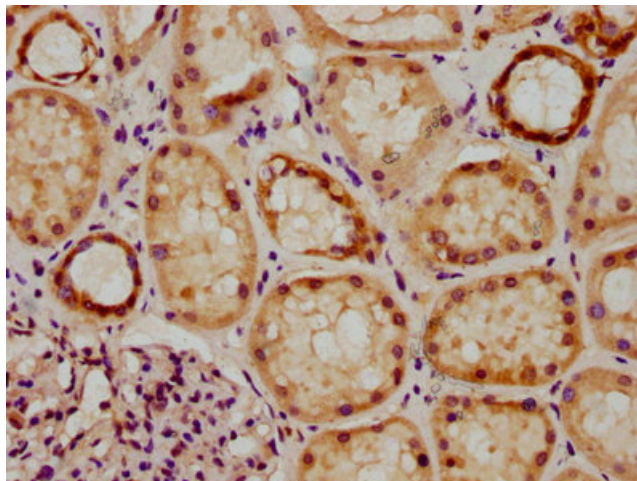
Validation Data

Image

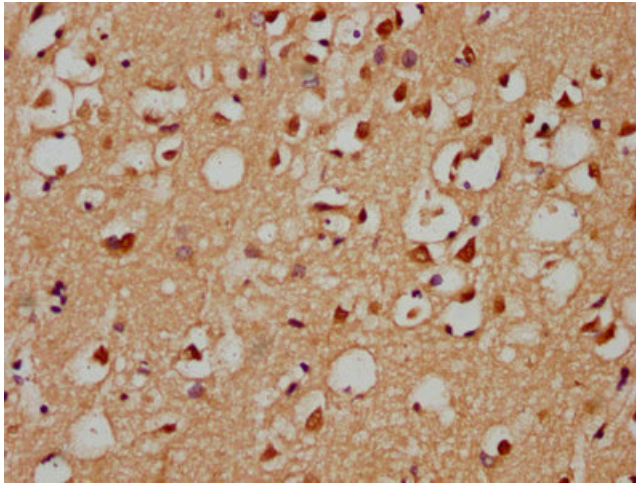


Description

Western Blot Positive WB detected in: HeLa whole cell lysate, MCF-7 whole cell lysate, HepG2 whole cell lysate, A549 whole cell lysate All lanes: GRHL1 antibody at 1:2000 Secondary Goat polyclonal to rabbit IgG at 1/50000 dilution Predicted band size: 71, 50, 58 kDa Observed band size: 71 kDa



IHC image of PACO61726 diluted at 1:300 and staining in paraffin-embedded human kidney tissue performed on a Leica Bond™ system. After dewaxing and hydration, antigen retrieval was mediated by high pressure in a citrate buffer (pH 6.0). Section was blocked with 10% normal goat serum 30min at RT. Then primary antibody (1% BSA) was incubated at 4°C overnight. The primary is detected by a biotinylated secondary antibody and visualized using an HRP conjugated SP system.



IHC image of PACO61726 diluted at 1:300 and staining in paraffin-embedded human brain tissue performed on a Leica Bond™ system. After dewaxing and hydration, antigen retrieval was mediated by high pressure in a citrate buffer (pH 6.0). Section was blocked with 10% normal goat serum 30min at RT. Then primary antibody (1% BSA) was incubated at 4°C overnight. The primary is detected by a biotinylated secondary antibody and visualized using an HRP conjugated SP system.