

## GLU1 Antibody

PACO62003

### Description

---

This GLU1 Antibody is supplied as a kit for advanced applications. The kit includes Bradford Reagent to quantify total protein concentration for accurate sample normalization (Optional).

### Product Information

---

<b>SKU:</b>	PACO62003
<b>Contents:</b>	50µl Bradford Reagent: 1 vial (2ml)
<b>Category:</b>	-
<b>Synonyms:</b>	GLU1 antibody, GLS1 antibody, At5g04140 antibody, F21E1_60Ferredoxin-dependent glutamate synthase 1 antibody, chloroplastic/mitochondrial antibody, EC 1.4.7.1 antibody, Fd-GOGAT 1 antibody
<b>Clone:</b>	Polyclonal
<b>Applications:</b>	<b>ELISA</b> <b>WB</b>
<b>Conjugation:</b>	Non-conjugated
<b>Reactivity:</b>	Arabidopsis thaliana

### Antibody Data

---

<b>Isotype:</b>	IgG
<b>Uniprot:</b>	Q9ZNZ7
<b>Host Species:</b>	Rabbit
<b>Purification:</b>	>95%, Protein G purified
<b>Immunogen:</b>	Recombinant Arabidopsis thaliana Ferredoxin-dependent glutamate synthase 1, chloroplastic/mitochondrial protein (106-505AA)
<b>Immunogen Species:</b>	Arabidopsis thaliana
<b>Buffer:</b>	Preservative: 0.03% Proclin 300 Constituents: 50% Glycerol, 0.01M PBS, pH 7.4
<b>Form:</b>	Liquid

## Preparation & Storage

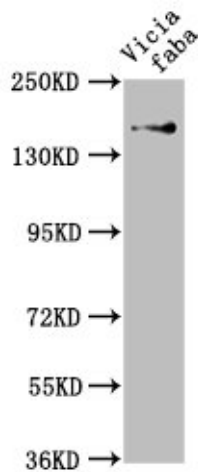
**Storage:** Upon receipt, store at -20°C or -80°C. Avoid repeated freeze. Store Bradford Reagent at Room Temperature for 1 Year.

<b>Recommended Dilutions:</b>	<b>Application</b>	<b>Recommended Dilution</b>
	WB	1:500-1:2000

**Protein Quantification (Optional):** To quantify total protein levels, use the Bradford Reagent included in this kit. Visit <https://www.assaygenie.com/bradford-protein-assay-protocol/> to view the full protocol

## Validation Data

### Image



### Description

Western Blot Positive WB detected in: Vicia faba leaf tissue All lanes: GLU1 antibody at 1:1000 Secondary Goat polyclonal to rabbit IgG at 1/50000 dilution Predicted band size: 177, 180 kDa Observed band size: 177 kDa