

BG2 Antibody

PACO62027

Description

This BG2 Antibody is supplied as a kit for advanced applications. The kit includes Bradford Reagent to quantify total protein concentration for accurate sample normalization (Optional).

Product Information

SKU:	PACO62027
Contents:	50µl Bradford Reagent: 1 vial (2ml)
Category:	-
Synonyms:	BG2 antibody, At3g57260 antibody, F28O9.110Glucan endo-1,3-beta-glucosidase antibody, acidic isoform antibody, EC 3.2.1.39, antibody, 1->3)-beta-glucan endohydrolase, antibody, 1->3)-beta-glucanase antibody, Beta-1,3-endoglucanase antibody, Beta-1,3-glucanase 2 antibody, AtBG2 antibody, Pathogenesis-related protein 2 antibody, PR-2 antibody
Clone:	Polyclonal
Applications:	ELISA WB
Conjugation:	Non-conjugated
Reactivity:	Arabidopsis thaliana

Antibody Data

Isotype:	IgG
Uniprot:	P33157
Host Species:	Rabbit
Purification:	>95%, Protein G purified
Immunogen:	Recombinant Arabidopsis thaliana Glucan endo-1,3-beta-glucosidase, acidic isoform protein (31-339AA)
Immunogen Species:	Arabidopsis thaliana
Buffer:	Preservative: 0.03% Proclin 300 Constituents: 50% Glycerol, 0.01M PBS, pH 7.4
Form:	Liquid

Manufacturers Statement: This final kit system is assembled and quality-released by Assay Genie Limited.

Preparation & Storage

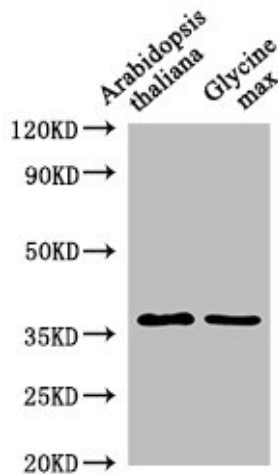
Storage: Upon receipt, store at -20°C or -80°C. Avoid repeated freeze.
Store Bradford Reagent at Room Temperature for 1 Year.

Recommended Dilutions:	Application	Recommended Dilution
	WB	1:500-1:2000

Protein Quantification (Optional): To quantify total protein levels, use the Bradford Reagent included in this kit. Visit <https://www.assaygenie.com/bradford-protein-assay-protocol/> to view the full protocol

Validation Data

Image



Description

Western Blot Positive WB detected in: Arabidopsis thaliana leaf tissue, Glycine max leaf tissue All lanes: BG2 antibody at 1:1000 Secondary Goat polyclonal to rabbit IgG at 1/50000 dilution Predicted band size: 38 kDa Observed band size: 38 kDa