

rbcl Antibody

PACO62039

Description

This rbcl Antibody is supplied as a kit for advanced applications. The kit includes Bradford Reagent to quantify total protein concentration for accurate sample normalization (Optional).

Product Information

SKU:	PACO62039
Contents:	50µl Bradford Reagent: 1 vial (2ml)
Category:	-
Synonyms:	rbcl antibody, AtCg00490 antibody, Ribulose biphosphate carboxylase large chain antibody, RuBisCO large subunit antibody, EC 4.1.1.39 antibody
Clone:	Polyclonal
Applications:	ELISA WB
Conjugation:	Non-conjugated
Reactivity:	Arabidopsis thaliana

Antibody Data

Isotype:	IgG
Uniprot:	O03042
Host Species:	Rabbit
Purification:	>95%, Protein G purified
Immunogen:	Recombinant Arabidopsis thaliana Ribulose biphosphate carboxylase large chain protein (3-479AA)
Immunogen Species:	Arabidopsis thaliana
Buffer:	Preservative: 0.03% Proclin 300 Constituents: 50% Glycerol, 0.01M PBS, pH 7.4
Form:	Liquid

Manufacturers Statement: This final kit system is assembled and quality-released by Assay Genie Limited.

Preparation & Storage

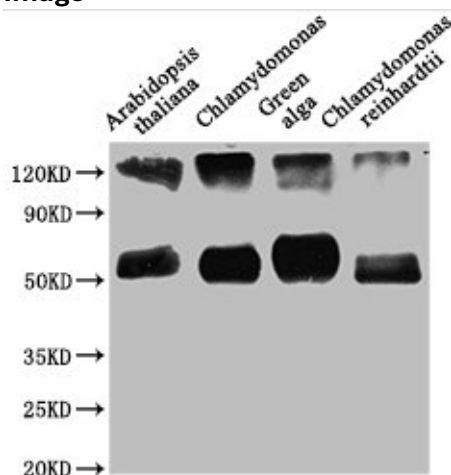
Storage: Upon receipt, store at -20°C or -80°C. Avoid repeated freeze.
Store Bradford Reagent at Room Temperature for 1 Year.

Recommended Dilutions:	Application	Recommended Dilution
	WB	1:500-1:2000

Protein Quantification (Optional): To quantify total protein levels, use the Bradford Reagent included in this kit. Visit <https://www.assaygenie.com/bradford-protein-assay-protocol/> to view the full protocol

Validation Data

Image



Description

Western Blot Positive WB detected in: Arabidopsis thaliana leaf tissue, Chlamydomonas tissue, Green alga tissue, Chlamydomonas reinhardtii tissue All lanes: rbcL antibody at 1:1250 Secondary Goat polyclonal to rabbit IgG at 1/50000 dilution Predicted band size: 53 kDa Observed band size: 53 kDa